

37-

Neshaminy

vs

Lower Moreland

**Friday Evening
October 13, 1950**

*we won
37-0*

0-

Langhorne 3297

Open Until 9 P. M.

REEDMAN MOTORS
NEW AND USED CARS
BOUGHT AND SOLD

Bucks County's Largest Automobile Dealers

Lincoln Highway

Penn del, Pa.

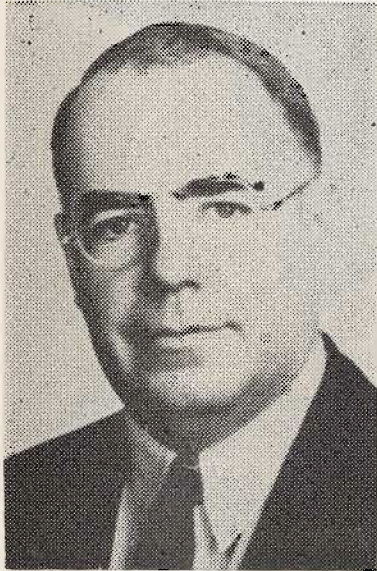
ANTONE'S BARBER SHOP

"We Cut Your Hair to Suit Your Personality"

121 Bellevue Avenue

Opposite Peoples National Bank

John A. A. Crowley Says:



Go Out and WIN THE GAME!

To Be **SURE**, Insure In *Insurance!*

★ Complete Local Sports Coverage

Delaware Valley Advance

AND THE MORRISVILLE HERALD

Leading Weekly Newspaper in Lower Bucks Co.

Phone Langhorne 3911 - 4529

GIVE TO PENNDEL WAR MEMORIAL

SUPPORT THE ACES

R. W. BROWN DRUGS

Penn del, Pa.

Patronize Our Advertisers

Compliments of

"THE PLAYWICKI"

KAUFFMAN BROTHERS

EXCAVATING & PAVING CONTRACTORS

Langhorne 2050

R. E. VANARTSDALEN

FLORIST

Hulmeville 6654

BUCKS COUNTY GLASS & MIRROR CO.

Hulmeville 6514

MC KINNEY'S ESSO SERVICENTER

Durham Road and Lincoln Highway

Penndel, Pa.

Phone Lang. 9979

YANK'S TOMATO PIE

Order Taken by Phone

HOAGIES AND STEAKS

Durham Road

Penndel, Pa.

Lang. 9913

Compliments of

HARDING'S

DRY CLEANING AND LAUNDRY

DAVENPORT GARAGE

Langhorne, Pa.

CHRYSLER PLYMOUTH

SALES AND SERVICE

Tires — Batteries — Lubrication

Phone Lang. 2241

IRWIN'S DRUG STORE

THE PRESCRIPTION DRUG STORE

Maple and Bellevue Aves.

Langhorne, Pa.

HUDSON'S RADIO AND TELEVISION

AUTHORIZED MOTOROLA & FADA

OLYMPIC SALES AND SERVICE

Bellevue and Maple Aves.

Lang. 2654

All Type Radio and Television Repairs

FELTON'S STORE

HOSIERY

NOTIONS

DRESSES

Phone Lang. 3981

Penndel, Pa.

Compliments of

PENNDDEL NEWSSTAND

R. V. DAFTER

FRIGIDAIRE APPLIANCES

SALES AND SERVICE

Penndel, Pa.

Lang. 3778

OLD STAR AIRPORT

VAN SANT'S SHELL SERVICE

JOHN A. VAN SANT, Proprietor

Langhorne, Pa.

Langhorne

Phone 7758

Penndel

Phone 2117

VARIAN'S

HOME APPLIANCES

Herbert F. Varian

Gifts

NANGLE'S STORE

Langhorne, Pa.

WALT ROTHENBACH'S HARDWARE

116 N. Bellevue Ave.

Langhorne

Phone 2221

GLIDDEN PAINTS — SPRED SATIN FINISH

Complete Line of

Hardware, Houseware, Electrical Appliances

GOOD LUCK TO THE TEAM

from the

VARSITY CHEERLEADERS

NESHAMINY H. S. FOOTBALL SQUAD

D. Barnett	B	92	A. Hofmann	E	87
D. Buckley	B	11	E. Hurst	E	97
R. Brodie	B	14	F. Lex	E	78
R. Castle	B	89	W. Pearson	E	68
T. Dilorio	B	88	E. Carber	T	94
G. Lauther	B	54	A. Simpson	T	97
J. Lawrence	B	64	J. Simpson	T	76
J. Maguire	B	99	R. Ward	T	16
L. Maurer	B	91	C. Yantis	T	95
R. Mercer	B	3	W. Galloway	G	83
R. Mongillo	B	93	J. Knight	G	85
W. Turner	B	96	D. Leitch	G	82
E. VanSant	B	97	J. O'Brien	G	84
R. Curtis	E	17	E. Peitsch	C	90
K. Dorsey	E	98	S. Cloak	C	68

Starting Line-up

E. Hurst (97) or
 R.E.—A. Hofmann (87)
 R.T.—C. Yantis (95)
 R.G.—J. Knight (85)
 C. —E. Peitsch (90)
 L.G.—D. Leitch (82)
 L.T.—E. Carber (94)
 L.E.—K. Dorsey (98)
 B. —R. Mongillo (93)
 B. —R. Castle (89)
 B. —L. Maurer (91)
 B. —D. Barnett (92) or
 E. VanSant (97)
 Coaches—JAMES EGLI
 WALTER BLAIR

Have a Coke



REFEREE'S SIGNALS



Illegal forward pass



Penalty refused, incomplete pass, missed goal, etc.



Holding



Delay of game or excess time out



Roughing kicker



Illegal motion or formation at snap



Personal foul

Coca-Cola

REG. U.S. PAT. OFF.



LOWER MORELAND H. S.

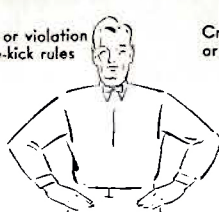
Starting Line-up

- | | |
|------------------------|----------------------|
| L.E.—J. Stoltz (9) | R.E.—T. Fecca (3) |
| L.T.—W. Lennon (38) | Q.B.—T. Messina (10) |
| L.G.—D. Priestley (30) | L.H.—R. Glack (11) |
| C. —R. MacAdam (15) | R.H.—F. Seganti (29) |
| R.G.—R. Smith (36) | F.B.—R. Hafner (37) |
| R.T.—J. Bell (14) | Capt.—TOM FECCA |
| | |
| J. Wernert—B (8) | J. Stoltz—E (9) |
| R. Flack—B (11) | W. Kennedy—E (5) |
| R. Hafner—B (37) | G. Allmon—E (1) |
| G. Messina—B (10) | W. Lennon—T (38) |
| M. Pesesko—B (35) | J. Bell—T (14) |
| G. Seganti—B (29) | R. Bartram—T (2) |
| A. Schuck—B (16) | H. Gilemyi—T (28) |
| K. Wiest—B (4) | H. Sover—T (20) |
| J. Cox—B (23) | R. Smith—G (36) |
| L. Gradklin—B (22) | H. Reimann—G (6) |
| W. Reynolds—B (21) | D. Priestley—G (30) |
| R. Worthington—B (12) | B. Chadwick—G (13) |
| L. Liss—B (25) | C. Sigg—G (26) |
| B. Badh—(19) | R. MacAdam—C (15) |
| G. Gecca—E (3) | D. Cox—C (27) |

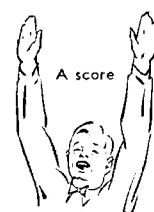
COPYRIGHT 1938, THE COCA-COLA COMPANY



Off-side or violation of free-kick rules



Crawling, pushing or helping runner



PENNDDEL CLEANERS & DYERS

41 S. Bellevue

Phone Langhorne 9976

CHAMPION SHOE REPAIR

"HARBOR OF BROKEN SOLES"

CHAS. GARVASIO, Prop.

10 Lincoln Highway

Penndel, Pa.

BUCK'S MARKET

Penndel, Pa.

LEWIS K. BRUNNER

Service

HULMEVILLE GARAGE

Supplies

Authorized Television Dealer

Hulmeville, Pa.

Phones 6443 and 6553

A. WEINRICH BAKERY

Penndel, Pa.

Bristol, Pa.

Phone Langhorne 2539

ROLLIN'S ESSO SERVICE

"BRAD"

Phone 9984

"HUBE"

"ROLL-IN AT ROLLIN'S"

Compliments of

POWELL'S GARAGE

Penndel, Pa.

LANGHORNE GARDENS FLOWER SHOP

Lincoln Highway

Langhorne 2161

Compliments of

BUCKS COUNTY CONSTRUCTION CO.

Penndel, Pa.

GENERAL CONTRACTORS

Excavating — Grading — Paving

BEST OF LUCK

from

FLOYD'S RESTAURANT

Penndel, Pa.

ROBERT'S BARBER SHOP

Bellevue Ave.

Penndel, Pa.

LANGHORNE HOUSE HOTEL

JOHN KALEDA, Prop.

LANGHORNE DRUG STORE

PRESCRIPTION PHARMACISTS

106 S. Bellevue

Langhorne, Pa.

Langhorne 9966 or 2235

KULP'S GARAGE

Cooper Power Mower and Planet Junior Tractors
Sales and Service

"Built for Those Who Want the Best"

Phone Langhorne 2247

Summit Ave.

Langhorne, Pa.

Langhorne

CAB

Newtown

TAXI SERVICE

Langhorne

2041

Newtown

2578

ROSCOE L. HORNER

FUNERAL DIRECTOR

Langhorne, Pa.

Lang. 3331

N. J. and Pa. License

**THE
PEOPLES NATIONAL BANK AND TRUST COMPANY**

LANGHORNE, PA.

MEMBER OF FEDERAL DEPOSIT INSURANCE CORPORATION

CHEERS

"EXTRA! EXTRA!"

**EXTRA, EXTRA, READ ALL ABOUT IT,
WE'VE GOT A TEAM AND WE'RE GOING TO SHOUT IT.
ONE FOR THE MONEY, TWO FOR THE SHOW,
COME ON TEAM, LET'S GO!**

"STRAWBERRY SHORTCAKE"

**STRAWBERRY SHORTCAKE, HUCKLEBERRY PIE,
V - I - C - T - O - R - Y
ARE WE IN IT, WELL I GUESS
'CAUSE WE BELONG TO N. H. S.**

"SPIN 'EM AROUND — SIT 'EM DOWN"

**SPIN 'EM AROUND, SIT 'EM DOWN,
STAND 'EM ON THEIR FEET,
NESHAMINY REDSKINS CAN'T BE BEAT!**

DEPENDABLE FOODS

E. E. HEIZMANN

FRESH MEATS — GROCERIES

FROZEN FOODS

Serving the Langhorne-Penn del Area

WESTINGHOUSE AND NORGE

ELECTRICAL APPLIANCES

Hardware — Paints — Glass

HARRY C. FRIEDRICH

Phone 2711

Penn del, Pa.

HENRY PALMER COMPANY

EST. 1902

"THE COMPLETE HOME SERVICE"

COAL — COKE — FUEL OIL — LUMBER — MILLWORK

PAINT — HARDWARE — AND ALL BUILDING MATERIALS

FINANCING

Penn del, Pa.—Opposite Langhorne Station

Phone Lang. 375

Somerton Branch—Orchard 3-8280

McCARTHY'S STORE

SHOES — WEARING APPAREL — DRY GOODS

APPLIANCES — HARDWARE — PAINTS

Penn del, Pa.

Greenwood Dairies

VISIT OUR DAIRY AND FROZEN FOOD STORE

"Everything That Counts in Dairy Products"

Lincoln Highway

Langhorne, Pa.

Langhorne 3764