

*Neshaminy - 19
Bristol - 6*

10c

1957

Friday, October 11th.

8:15 p. m.

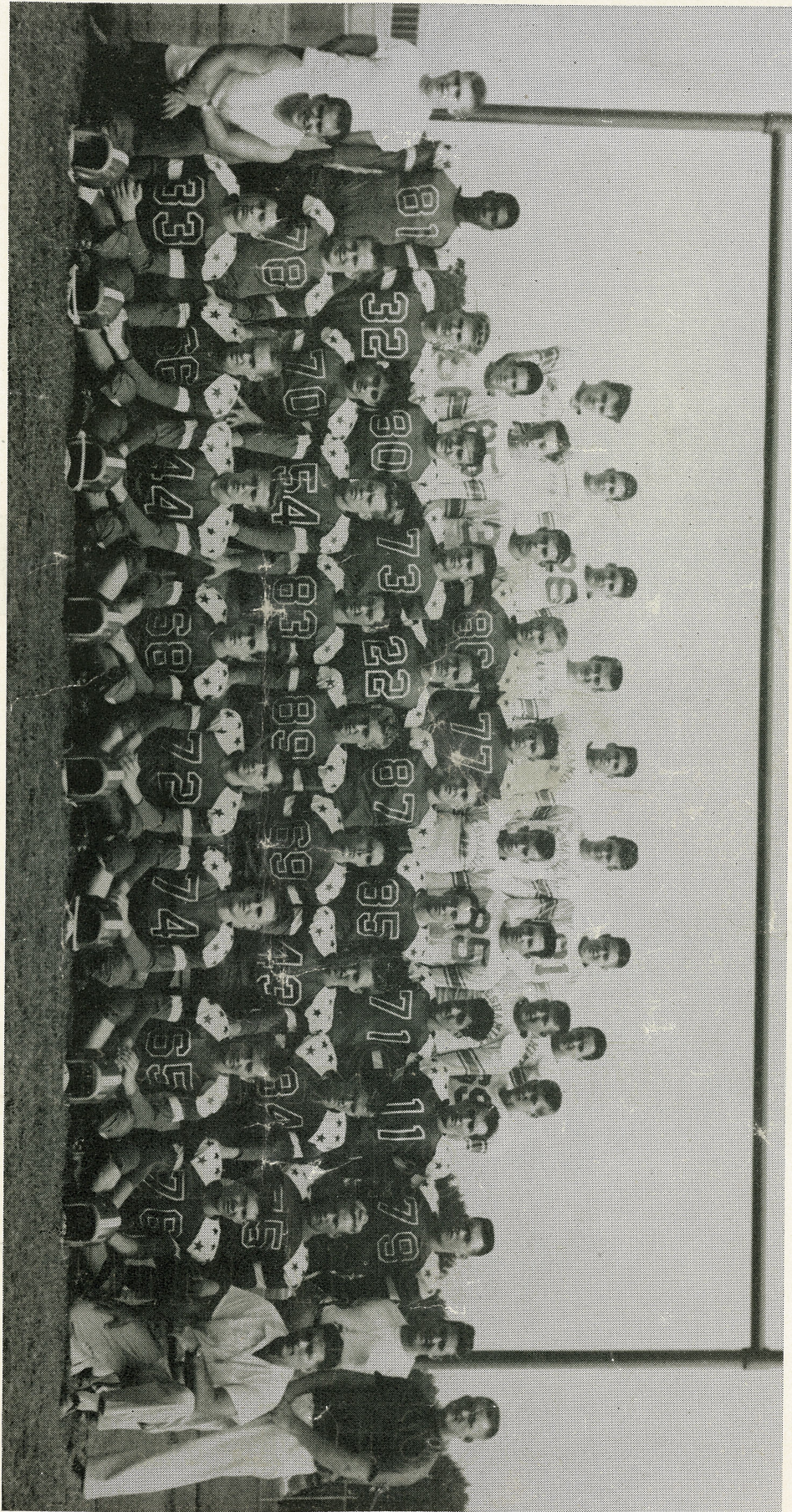
NESHAMINY

vs

BRISTOL H. S.

LEFT TO RIGHT:
 FRONT ROW: JOHN SWARTZ, COACH; JOHN KURTZ, JIM FOSTER, JIM FLANIGAN, JERRY LAUTHER, HARRY DAVIS, FRED ERMEL, WERNER FRENTROP, DICK FRYMYER, HARRY FRANKS, COACH.
 SECOND ROW: BARRY WHITE, JOE DEL ROSSI, REDS GASKILL, HERB CUMMINGS, JIM KOCH, RICH BAXTER, TOM STRICKER, JOHN HEROLD, DON BOCKHORN, JOHN PETERCUSKIE, COACH.
 THIRD ROW: BOB KING, MGR.; RUSH COVINGTON, RICH SIMON, KEN GOVER, JOE NIECKOSKI, FRANK CONROY, TOM GEORGE, LOU GENTNER, ANTHONY SYLVESTER, JERRY MLADGEN, TOM NUSS, ROY MITCHELL, MGR.
 FOURTH ROW: JIM GLASER, DAN MALONEY, STEVE RICE, FRANK SARR, JERRY LEVANS, ED. SLAUGHTER, AL HILL, PETER BLODDGET, JOHN ZAMBA.
 FIFTH ROW: ED. RHOADS, STEVE PULAK, AL DI STEFANO, SATCH WATKINS, ED FIORELLI, BARRY MAY, GEORGE FOX, HARRY SEGANTI.

NESHAMINY REDSKINS—1957



THE PEOPLES NATIONAL BANK & TRUST CO.

Penndel - Langhorne - Feasterville

Member Federal Deposit
Insurance Corp.

BUCK HOTEL

Feasterville, Pa.

Compliments of

MATT'S BARBER SHOP

Hulmeville SK 7-4000

CLAYTON H. ERVIN REGISTERED

AIR CONDITIONING
HEATING PLUMBING
PUMPS WATER SYSTEMS

132 E. Maple Ave.

Langhorne SK 7-7735

LANGHORNE GARDEN FLOWER SHOP

Lincoln Highway

Langhorne R. D. 2, Pa.

Phone SKyline 7-2161

John R. Hollingsworth, Jr.

HEATING and PLUMBING
CONTRACTOR

Langhorne, Pa. SK 7-3456

STEPHEN P. NIECKOSKI INSURANCE FOR EVERY NEED

1324 Arbutus Ave.

Langhorne SK 7-4235

ROBERT M. COPELAND, Inc. REALTOR

Feasterville, Pa. EL 7-0967

Morrestown, N. J. Moorestown 9-2700

MacCORKLE'S GULF SERVICE

Bustleton Pike and Street Road

Feasterville EL 7-9807

NIXON REALTY, INC. INSURANCE—REAL ESTATE

107 E. Maple Ave.

Langhorne SK 7-4200

Compliments of

O.K.O. PLUSH

Hulmeville, Pa. SK 7-6789

R. W. BROWN DRUGS

Penndel, Pa. SK 7-3737

AL REEL BUILDER Langhorne, Pa. SK 7-2545	SPAT'S TOMATO PIES 10 Lincoln Highway Penndel SK 7-2778 PHONE ORDERS ACCEPTED	JOHN'S BARBER SHOP Expert Haircutting—3 Barbers At The New Feasterville Shopping Center Street Rd. & Bustleton Ave. EL 7-6722 Compliments of PENNDL MOTOR PARTS Penndel SK 7-5121 Open 8 A.M. to 11 P.M. SK 7-9100 BALDERSON STORE CIGARS CIGARETTES ICE CREAM Crescent Street Penndel
DELAWARE VALLEY LOCKERS, Inc. FRESH MEATS and CUSTOM PROCESSING Newtown WO 8-3602	FEASTERVILLE LUNCHEONETTE HOT and COLD PLATTERS HOAGIES — STEAKS ALL KINDS OF SANDWICHES	Compliments of PENNDL MOTOR PARTS Penndel SK 7-5121 Open 8 A.M. to 11 P.M. SK 7-9100 BALDERSON STORE CIGARS CIGARETTES ICE CREAM Crescent Street Penndel
ROBERTS BARBER SHOP ESTABLISHED 50 YEARS Penndel, Pa.	KENDERDINE'S FRESH MEATS & GROCERIES 300 Maple Ave. Langhorne SK 7-7756	Compliments of PENNDL MOTOR PARTS Penndel SK 7-5121 Open 8 A.M. to 11 P.M. SK 7-9100 BALDERSON STORE CIGARS CIGARETTES ICE CREAM Crescent Street Penndel
PENNDL MACHINE CO., INC. TOOLS—DIES—MACHINES JOSEPH SPOLAR, President Lincoln Highway SK 7-5153	T. STAUDENMAYER & SONS PAINTERS TED ED Siles EL 7-2321	Compliments of PENNDL MOTOR PARTS Penndel SK 7-5121 Open 8 A.M. to 11 P.M. SK 7-9100 BALDERSON STORE CIGARS CIGARETTES ICE CREAM Crescent Street Penndel
REST—RELAX—REDUCE ANTONE'S SLENDERIZING and BEAUTY SALON 123 Bellevue Ave. Langhorne SK 7-5302	TITLE ABSTRACT CO. OF PA. Representing Lawyers Title Insurance Corp. HARKER C. IDELL Bucks County Office 131 S. Bellevue Ave. Langhorne, Pa.	Compliments of PENNDL MOTOR PARTS Penndel SK 7-5121 Open 8 A.M. to 11 P.M. SK 7-9100 BALDERSON STORE CIGARS CIGARETTES ICE CREAM Crescent Street Penndel
LANE'S 5c to \$1.00 STORES Bridgetown Pike Feasterville EL 7-9872	THE LANTERN SHOP 27 Street Rd. at Bustleton Pike DOAN KEHOE Feasterville EL 7-1747	Compliments of PENNDL MOTOR PARTS Penndel SK 7-5121 Open 8 A.M. to 11 P.M. SK 7-9100 BALDERSON STORE CIGARS CIGARETTES ICE CREAM Crescent Street Penndel
PENN JERSEY AUTO STORES 934 Bustleton Pike at Street Rd. Feasterville EL 7-5515	LANGHORNE DRUG STORE We Deliver Anywhere 106 S. Bellevue Ave. Langhorne	Compliments of PENNDL MOTOR PARTS Penndel SK 7-5121 Open 8 A.M. to 11 P.M. SK 7-9100 BALDERSON STORE CIGARS CIGARETTES ICE CREAM Crescent Street Penndel
PINE TREE FARMS FURNITURE EL 7-0774 222 Bustleton Pike Feasterville	DOROTHY BINDER'S FASHION SHOP CLOTHING FOR THE DISCRIMINATING WOMAN Open Evenings 'til 9 - Closed Wednesdays Park and Bellevue Avenues Hulmeville, Pa. SK 7-6610	Compliments of PENNDL MOTOR PARTS Penndel SK 7-5121 Open 8 A.M. to 11 P.M. SK 7-9100 BALDERSON STORE CIGARS CIGARETTES ICE CREAM Crescent Street Penndel

NESHAMINY HIGH SCHOOL FOOTBALL TEAM 1957 - 1958

NAME	NUMBER	POSITION	GRADE	AGE	HEIGHT	WEIGHT
Jerry Mladjen	11	B	12	17	6' 2"	175
Frank Conroy	22	T	12	17	5'10"	168
Bill Fisher	82	E	12	17	5' 9"	153
Jim Foster	66	B	12	17	5' 7"	147
Tom George	87	T	12	16	6'	198
Jerry Levans	77	T	12	18	5' 9"	160
Joe Nieckoski	73	T	12	16	6'	170
Frank Sarr	86	C	12	17	5'10"	165
Tom Stricker	43	B	12	16	5'10"	150
Lou Gentner	85	G	12	17	5'10"	160
Rushton Covington	81	E	11	16	6' 3"	170
James Flanigan	44	B	11	17	5' 7"	158
George Fox		T	11	16	5' 9"	190
Albert Gaskill	54	B	11	16	5' 7"	150
John Herold	84	E	11	16	5' 8"	154
Daniel Maloney		E	11	15	5'10"	143
Jerry Mohn	88	G	11	15	5' 8"	167
Tom Nuss	79	G	11	16	6'	175
Steve Rice		E	11	16	5'11"	162
Rich Simon	32	B	11	16	5'11"	165
John Zamba		E	11	15	5'10"	172
Rick Baxter	69	E	10	15	6'	150
Don Bockhorn	75	G	10	16	5' 7"	145
Herb Cummings	83	C	10	15	5'11"	155
Harry Davis	72	G	10	15	5' 7"	144
Joe Del Rossi	70	B	10	14	5' 9"	160
Al Distefano		G	10	15	5' 9"	146
Fred Ermel	74	B	10	14	5' 6"	150
Ed Fiorelli		E	10	14	5'10"	150
Hal Fladd		B	10	15	5' 9"	139
Werner Frentrop	65	B	10	15	5' 8"	140
Richard Frymyer	76	B	10	15	5' 8"	150
Jim Glaser		T	10	14	5' 6"	144
Ken Gover	80	G	10	15	5'10"	170
Al Hill		C	10	15	5' 8"	130
Jim Koch	89	G	10	15	5'11"	150
Ralph Krueger		E	10	14	5' 8"	130
John Kurtz	33	B	10	14	5' 8"	145
Jerry Lauther	68	C	10	16	5' 6"	136
Barry May		E	10	16	5' 8"	130
Steve Pulak		T	10	14	5'11"	140
Ed Rhoads		E	10	14	5' 8"	145
Tony Sylvester	71	E	10	15	6'	175
Harry Seganti		T	10	15	5' 4"	140
Ed. Slaughter		B	10	14	5' 6"	125
Art Troyani		E	10	14	5' 6"	130
Bill Watkins		G	10	15	5' 5"	135
Barry White	78	E	10	15	5' 8"	160
Pete Blodgett		T	11	16	6'	220

This Team is Hard to Beat

- LE—BILL OTTS GROCERY
B & Highland Ave.
Parkland SK 7-5270
- LT—JESSIE TERRY GULF FUEL OIL
Bridgetown Pike & Elmwood Ave., Feasterville
EL 7-2200
- LG—CLAYTON H. ERVIN
Plumbing & Heating Installations
132 Maple Ave., Langhorne SK 7-7735
- C—ROLLINS ESSO SERVICE CENTER
Bellevue Ave. and Super Ave. SK 7-9184
- RG—LUKENS
Gifts - School and Office Supplies
Bustleton Pike and Street Rd., Feasterville EL 7-9909
- RT—STRATHMANN SUPPLY CO.
Lumber and Bldg. Supplies
Feasterville EL 7-3940
- RE—OLYMPIC RECONDITIONERS
Stroudsburg, Pa.
- QB—GEORGE W. WALDMAN
Sheet Metal Work
Feasterville EL 7-2908
- LHB—PENNDL BUILDERS SUPPLY
Penndel SK 7-4500
- RHB—KAUFFMAN BROTHERS
General Contractors
Langhorne, Pa.
- FB—BUCKS COUNTY BEVERAGE CO.
Penndel
- COACH—ARMS ESSO SERVICE CENTER
Bustleton Pike, Feasterville, Pa. EL 7-9891



Have a Coke

NESHAMINY HIGH SCHOOL FOOTBALL TEAM—1957-58

PROBABLE STARTING LINEUP

B	Jerry Mladjen	E	John Herold
T	Frank Conroy	G	Jerry Mohn
T	Tom George	G	Tom Nuss
C	Frank Sarr	B	Rich Simon
B	Tom Stricker	E	Rick Baxter
B	Albert Gaskill		

Colors: Red and Blue

Nickname—Redskins

Coaches—Harry Franks, John Petercuskie, John Swartz

1957 BRISTOL HIGH FOOTBALL ROSTER

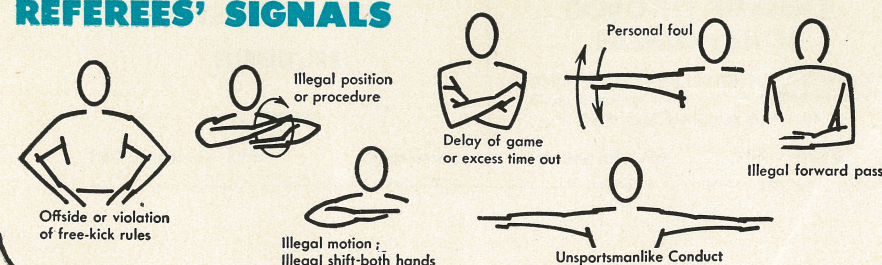
NAME	Position	Grade	White Jersey
Fred Williamson	B	11	11
Joe Cimino	T	10	84
Wilmer Johnson	E	11	80
Joe Favata	C	11	63
Jesse Vanzant	E	11	52
Edwin Carlson (Capt.)	G	12	64
James Frye	G	12	62
John Long	B	10	41
Richard Fenton	B	10	12
Robert Petrucci	G	11	75
Joe Antonelli	T	10	70
James Jones	E	11	81
Ronald Strong	B	11	42
Edward Quarles	E	11	83
Dom Rago	T	12	82
Robert Vergentino	B	11	85
Frank Kohn	G	10	72
James Ditulio	B	11	22
Al Capriotti	C	12	10
Fred Straffe	B	11	21
Joe Kowal	E	10	51
Tom Profy	E	11	71
Bob Sabatini	B	10	32
Fran Giagnacova	G	11	61
Don Giagnacova	T	12	65
Phil Shire	T	11	74
Donald Coles	B	10	50

Last Season's Record Won 8 Lost 3

Colors: Red and Gray

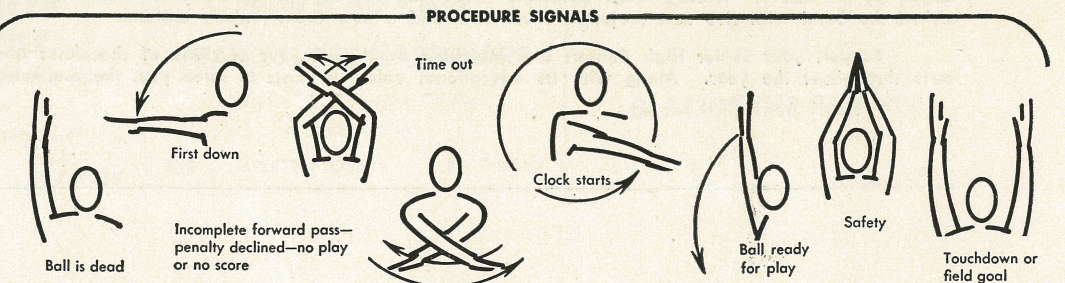
Head Coach — Fred Prender, Frank Penn

REFEREES' SIGNALS



FOUL SIGNALS

PROCEDURE SIGNALS



"COKE" IS A REGISTERED TRADE-MARK

THE NESHAMINY JUNIOR HIGH SCHOOL BAND



The Junior High School Band, under the direction of Miss Gloria Dressler, participates annually at Junior and Senior High football games, local Hallowe'en and Memorial Day parades, also at Christmas and Spring concerts. The band supplied music for the Cornerstone Laying ceremonies at the Samuel Everitt and Poquessing Elementary Schools, and for the Cornerstone Laying and Dedication of the Neshaminy Junior High School. During the past year the band also participated in the Pennsylvania Bandmasters' "Parade of Bands" at Sunbury, Pa.

THE NESHAMINY SENIOR HIGH SCHOOL BAND



The Neshaminy High School Concert and Marching Band, under the direction of Bruce G. Thompson, along with its performances for the student body during the school week, makes many public appearances. Perhaps the most familiar of these are the half-time shows at football games. The band also plays for community functions and gives regularly scheduled concerts.

The Band Boosters, an active group of parents, play an important role in the band's activities. The Boosters, financed largely by the sale of "World's Finest Chocolate" each Fall, pay for the Band's yearly New York trip and this year have furnished the band with five new majorette's uniforms and a new drum major's uniform.

Support your Senior High Concert and Marching Band with your purchase of chocolates and your presence at its concerts throughout the year. Along with its educational value, it exists to serve you, the community.

Compliments of
SHAPCOTT'S
UNITY-FRANKFORD STORE
BUY WITH CONFIDENCE
Hulmeville SK 7-9752

BUCCI'S FOOD MARKET
SK 7-2680
WE AIM TO PLEASE
Crescent and Centre Sts. Penndel

Compliments of
VORNHOLD WALLPAPERS.
INC.
501 Main St.
Hulmeville SK 7-6641

McCARTHY'S STORE
Hardware—Paints
Heating and Plumbing Supplies
Shoes—Wearing Apparel
Dry Goods
Penndel SK 7-3736

BUCKS COUNTY
STATIONERS
COMPLETE OFFICE OUTFITTERS
EARLE C. WILT, OWNER
136 Watson Ave.
Langhorne SK 7-4197

DUNGAN'S
"Feasterville's Jr. Dept. Store"
333 Bustleton Pike EL 7-1357

FUEL OIL—BURNER SERVICE
FUEL OIL TANK CLEANING
JOHN B. TETTEMER
912 Walnut St.
Hulmeville SK 7-6499

HARRY A. FUNCKE
TEXACO SERVICE
Auto Repairing—Road Service
Brake Service
Dolton Road and Bustleton Pike
Feasterville
Home: EL 7-2166 Business: EL 7-9989

FRONT END ALIGNMENT
A SPECIALTY
THOMPSON Motor Service
WHEEL BALANCING
EXIDE BATTERIES LEE TIRES
Lincoln Highway Penndel SK 7-3154

FAGAN'S TIRE &
BATTERY SERVICE
EL 7-0788 EL 7-6007
Phila. Phone: ORchard 3-7166
Wholesale and Retail
TRUCK—PASSENGER
414 W. Street Road Feasterville
1/2 Mile West of Bustleton Pike

GOOD LUCK
"REDSKINS"
NESHAMINY ATHLETIC
BOOSTERS
ASSOCIATION

MAPLE CLEANERS
CLEANING—PRESSING
REPAIRING—ALTERATIONS
125 Bellevue Ave.
Langhorne SK 7-9167

DAVENPORT'S GARAGE
Maple Ave. & Pine St. Langhorne

DAVIS TEXACO
SERVICE STATION
Lincoln Highway
Penndel SK 7-9192

LANGHORNE FEDERAL
SAVINGS & LOAN ASS'N
A. PAUL TOWNSEND, JR. Secretary
Langhorne SK 7-3393

THERE IS ONLY ONE
FEASTERVILLE HARDWARE
"Where The Turnpike Crosses
Bustleton Pike"
THE COMPLETE STORE EL 7-0663

HARDWARE
HARRY T. MAY
Paints Hardware Electrical
Penndel SK 7-2711

FEASTERVILLE HOBBY SHOP
HOBBY SUPPLIES—TRAINS
TOYS—SCHWINN BICYCLES
Bicycles and Trains Repaired
224 Bustleton Pike EL 7-0862

COOPERATIVE FURN. CO.
Phila. Cooperative Sales Co.
EVERYTHING FOR THE HOME
U.S. Rt. #1 and Durham Rd.
Penndel, Pa. SK 7-5471

VINCE'S BARBER SHOP
Opposite Peoples National Bank
3 BARBERS NO WAITING
CHILDREN A SPECIALTY
121 Bellevue Ave. Langhorne

LEW BOND'S Service Station
Hulmeville Ave. & Lincoln Hwy.
Penndel SK 7-9148

TOWNE PRINT SHOPPE
COMMERCIAL PRINTING
RICK REED, PROP.
117 N. Bellevue Ave.
Langhorne SK 7-7780

ANGELINE'S BEAUTY SHOP
37 Lincoln Highway
Penndel SK 7-2531

Compliments of

BLACKIE THE PAINTER

PINE TREE DELICATESSEN
IMPORTED MEATS & CHEESES
HOME MADE SALADS
Hrs. Daily and Sunday 10 to 10
Monday 6-10
84 Bustleton Ave.
Feasterville EL 7-3643

AL'S
HOAGIES STEAKS
TOMATO PIES
Street Road and Bustleton Pike
Feasterville EL 7-9921

BRADLEY'S ATLANTIC
SERVICE STATION
Bustleton Pike Above Street Road
Feasterville EL 7-9976

OVERHEAD GARAGE DOORS
Call
THE ROLLY DOOR & SUPPLY CO., INC.
Penndel SK 7-5155

RAY'S FLYING "A"
TIDEWATER STATION
PICK UP and DELIVERY SERVICE
TUNE-UPS and REPAIRS
Bustleton Pike and Buck Road
Across From Buck Hotel
Feasterville EL 7-9903

E. M. F.
ELECTRIC SUPPLY CO.
3 Park Lane
Feasterville EL 7-1671

HARFORD DREXLER
ELECTRICAL CONTRACTOR
G.E. AUTHORIZED DEALER
INSTALLATION and REPAIRS
Bustleton Pike
Feasterville EL 7-0217

PENNDL CLEANERS
PROMPT DELIVERY and
PICKUP SERVICE
41 S. Bellevue Ave. SK 7-4584

FEASTERVILLE AUTO CENTER
Complete Auto Service
NEW and USED CARS
117 Bustleton Ave. Feasterville
EL 7-9826

WORK CLOTHES—BOYS' WEAR
SCHOOL AWARD SWEATERS
M & M MEN & BOYS' WEAR
SLACKS
FREE ALTERATIONS EL 7-9822
Street Road at Bustleton Pike

Call and Delivery
EL 7-0646
KENT'S DRY CLEANING
4 HOUR SERVICE
Bustleton Pike Feasterville

WATER SYSTEMS INSTALLED
PUMPS REPAIRED
ALBERT GINDHART
PLUMBING and HEATING
Street Road and Bustleton Pike
Feasterville EL 7-1842

WILLIAM W. DUNN
FUNERAL DIRECTOR
378 Bellevue Ave.
Langhorne SK 7-3331

CHAMPION KNITWEAR CO.
Compliments of
Rochester 4, N. Y.

Advertising Novelties
HARRY E. BAUS
PRINTER OF THIS SCHEDULE
COMMERCIAL & JOB PRINTING
143 Noelan Ave.
Penndel SK 7-2358

DELAWARE BEVERAGE CO.
Distributors
BEER — ALE — PORTER
and SOFT DRINKS
WHOLESALE RETAIL
S. State Street
Free Home Delivery Service
Cold Beer Supplied
Newtown WO 8-2696

REEDMAN
MOTOR MOTORAMA
CHEVROLETS
1 Million Dollar Inventory
Route #1 Langhorne

BOWL AT
JUBILEE LANES
Country Club Shopping Center
Route 1 Levittown

EBERT'S WAYSIDE INN
SANDWICHES
LIQUORS—WINES—BEER
18 West Lincoln Highway
Penndel SK 7-9173

HOSIERY NOTIONS DRESSES
EARL W. FELTON
114 Bellevue Ave.
Penndel SK 7-3981

WHEELER'S
SERVICE STATION
FRUIT and PRODUCE
Bellevue and Trenton Ave.
Hulmeville WI 6-9838

IRVIN'S DRUG STORE
The Prescription Drug Store
Maple and Bellevue Ave. Langhorne

THE MOST COMPLETELY STOCKED
HARDWARE STORE IN YOUR AREA
HEATING—PLUMBING
ROOFING—ELECTRICAL
SUPPLIES
RALPH DeFREHN'S
HARDWARE STORE
Compliments of

FLANNERY'S
Compliments of

SKYLINE DINER
Penndel, Pa.

IT WAS A PLEASURE — THANKS

To the people whose responsibility it was to get advertisers to buy space in this magazine—it was a pleasure—and fun, too, for two reasons. First it was a change from the daily grind and secondly they met a lot of nice folks.

The average answer to a request for an ad ran something like this—"Well I'm not too sure whether or not it will bring me more business but if it will help the Boys and Girls of Neshaminy sign me up.

Now that's a pretty nice attitude to take and now I am sure you will agree that the business people who helped make this program possible are pretty swell folks.

We would like to suggest that whenever you need anything, be it a product or a service, take time out to glance over these pages first. Chances are you will find exactly what you are looking for and we know you will never find nicer people to deal with.

Neshaminy Athletic Boosters Association
PROGRAM COMMITTEE

TREVOSE HEIGHTS
CLEANERS
Pickup and Delivery Service
Camill A. Stroh
Langhorne Rd. 3 EL 7-0938

SIMOND'S
SERVICE STATION
4127 Brownsville Road
Trevose EL 7-0572

City DE 6-8314 Churchville 1045
OAKFORD DISPOSAL
SERVICE
Owned and Operated by
Chas. Bean and Son
Oakford, Pa.

EDW. W. ADAMS
DEPENDABLE
PAINTING and JOBBING
Langhorne R.D. 1 EL 7-1070

RALPH E. CARSON
ELECTRICAL CONTRACTOR
Oakford EL 7-1414

FAUST FUNERAL HOME
24 HOUR SERVICE
Kimbel Faust, Director
Hulmeville SK 7-6662

DELAVARE BEVERAGE CO.
Distributors
BEER — ALE — PORTER
and SOFT DRINKS
WHOLESALE RETAIL
S. State Street
Free Home Delivery Service
Cold Beer Supplied
Newtown WO 8-2696

WHEELER'S
SERVICE STATION
FRUIT and PRODUCE
Bellevue and Trenton Ave.
Hulmeville WI 6-9838

IRVIN'S DRUG STORE
The Prescription Drug Store
Maple and Bellevue Ave. Langhorne

THE MOST COMPLETELY STOCKED
HARDWARE STORE IN YOUR AREA
HEATING—PLUMBING
ROOFING—ELECTRICAL
SUPPLIES
RALPH DeFREHN'S
HARDWARE STORE
Compliments of

FLANNERY'S
Compliments of

SKYLINE DINER
Penndel, Pa.

LICENSED GUN DEALER
GUNSMITHING SERVICE
HUNTING and FISHING LICENSES
ARCHERY EQUIPMENT

E. J. MALONE & SON
SPORTING GOODS

Complete Line Fishing Tackle

21 Street Road
Feasterville EL 7-4961

Est. 1923 Elmwood 7-0563

McLEAN & SONS
REALTORS

FEASTERVILLE, PA.

HOMES FARMS

TWO STORES TO SERVE LOWER BUCKS

RICHBORO PHARMACY

Bustleton Pike, near 2nd St. Pike

EL 7-1345

FEASTERVILLE PHARMACY

Bustleton Ave., below Street Road

EL 7-5210

PROMPT FREE DELIVERY
PRESCRIPTIONS
EXPERTLY FILLED

GREENWOOD
DAIRIES

McKEE FORD

EL 7-6600 EL 7-6601

Bustleton Pike Feasterville

ALLAN W. WILLIAMS

REAL ESTATE—INSURANCE
MORTGAGES

1205 Buck Road Feasterville
(Opposite "The Buck Hotel")

Office EL 7-2230
EL 7-2231 OR 3-2844

AUTHORIZED DEALER
DE SOTO PLYMOUTH

Used Cars

McBRIDE MOTORS
(Across from Firehouse)

Feasterville EL 7-0980—0985
OPEN EVENINGS 'TIL 9:00 P.M.
SATURDAY 'TIL 5:00 P.M.

EDEN SAVINGS
& LOAN ASS'N.

CURRENT DIVIDEND 3½ %

122 Bellevue Ave. Penndel

SK 7-5279

AUTHORIZED
WASHER SERVICE

PHILCO
BENDIX
KELVINATOR

BENDIX
Automatic
Home Laundry

SALES INSTALLATION
LEVITTOWN'S
FACTORY AUTHORIZED SERVICE

● WASHERS

● DRYERS

SK 7-4981

EDW. ANDRADE

LINCOLN HWY. LANGHORNE, PA.

(Opp. Country Club Shopping Center)