

NESHAMINY JOINT SCHOOL DISTRICT

NESHAMINY SENIOR HIGH SCHOOL STADIUM
LANGHORNE, PENNSYLVANIA

NESHAMINY HIGH SCHOOL
"REDSKINS"

vs.

JOHNSON CITY HIGH SCHOOL
WILDCATS

OFFICIAL SOUVENIR
PROGRAM - 25 CENTS

INDEX:

Our School	Page 2
Time Out	Page 2
Neshaminy Football Staff	Page 3
Outstanding Performers - Bethlehem Game	Page 4
Redskin Roster and Staff	Page 5
Neshaminy Starting Line-Up	Page 7
Johnson City Starting Line-Up	Page 8
Johnson City Roster	Page 10
Redskin Offense - Defense	Page 11
Cheerleaders and Majorettes	Page 12
Winter Sports at Neshaminy	Page 13

Low Peak

SATURDAY EVENING, OCTOBER 23, 1965 - 8:15 P.M.

ED CARBER'S

TAVERN

Where Everyone Meets
After the Game
BEER - LIQUOR and
SANDWICHES
PIZZA PIES



COUNTRY CLUB
SHOPPING
CENTER

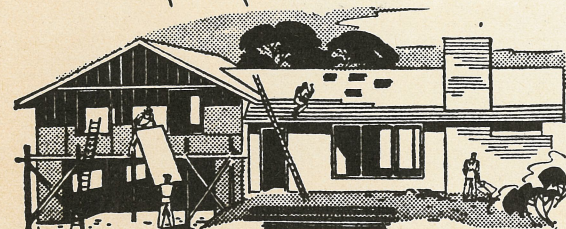
Windsor 3-1940

EL 7-1212
EL 7-3700



OAKFORD, PENNA.

- LUMBER
- MILLWORK
- BUILDING MATERIALS
- HARDWARE
- FUEL OIL ● COAL



Open a Saving Account Now in Person or by Mail

Current Dividend **4%**

Savings Insured up to \$10,000

LANGHORNE FEDERAL SAVINGS & LOAN ASSOCIATION

Langhorne, Pa.



Phone: SKyline 7-5138

A. Paul Townsend, Jr., Secretary

COMPLIMENTS OF

Sylvester & Keating



REALTORS - INSURANCE

151 BELLEVUE AVENUE
PENNDel, PENNSYLVANIA

SKyline 7-6988

School Days . . .



NESHAMINY

REDSKINS

TIME OUT

3-0-1

NESHAMINY BIG SIX CHAMPIONS

L
O
W
E
R
B
U
C
K
S
L
E
A
G
U
E

B
I
G
S
I
X
L
E
A
G
U
E

"SKINS" WIN THE "BIG 6" - Before a smaller than usual crowd (6000) the Redskin Offensive, led by QB Colbert, demoralized Bethlehem early in the game on long runs by Colbert - 26 yards, Barr - 33 yards and Rotolo - 20 yards for the first T.D. In the opening seconds of the second quarter Colbert rolled out for 7 yards and another score. Neshaminy 13 - Bethlehem 0.

After the kick-off the Redskin "Savages" held - forcing Bethlehem to punt and Neshaminy's Offensive Unit took to the air with a pass to DeMezza - two fine runs by Rotolo and Barr - and then the third score on a screen pass from Colbert to Rotolo. (20-0) The final Redskin score of the half came on a beautiful pass play from Colbert to Barr which covered 60 yards. HALF TIME - Neshaminy 27 - Bethlehem 0.

Neshaminy reserves saw considerable action in a second half which saw just one T.D. registered by the 'Skins. Following a fumble recovery by Settles and a fine run by Pasquine the final tally of the game came on a 15 yard run by Tom Munski. Final Score - Redskins 34 - Bethlehem 0.

TONIGHT'S OPPONENT - Johnson City . . . Johnson City is located four miles across the Pennsylvania state line near Binghamton. Binghamton is 55 miles north of Scranton. The New York school is coached by Hank Diller, who has been on the job since 1960. In his first campaign, the Wildcats were 7-1 and captured the Southern Tier Conference flag.

Johnson City has claimed its league crown five times since the formation of the loop in 1947 and is the only school to accomplish the feat.

Diller's five-year mark is 22-15-3 but his opponents are rated big and tough. The Wildcats battle schools with an average enrollment of 1400 students. Johnson City has 1066 pupils and is classed Double A in the New York Interscholastic Athletic Association. The classification is based on male population. A school must have 650 boys to be eligible for the Double A bracket.

Johnson City finished with a 4-3-1 mark in 1964. The Wildcats lost to Union-Endicott, 48-7, the winners were the unbeaten (8-0) league champions. Other defeats came at the hands of Elmira Free Academy, 7-0, and Vestal, 55-0.

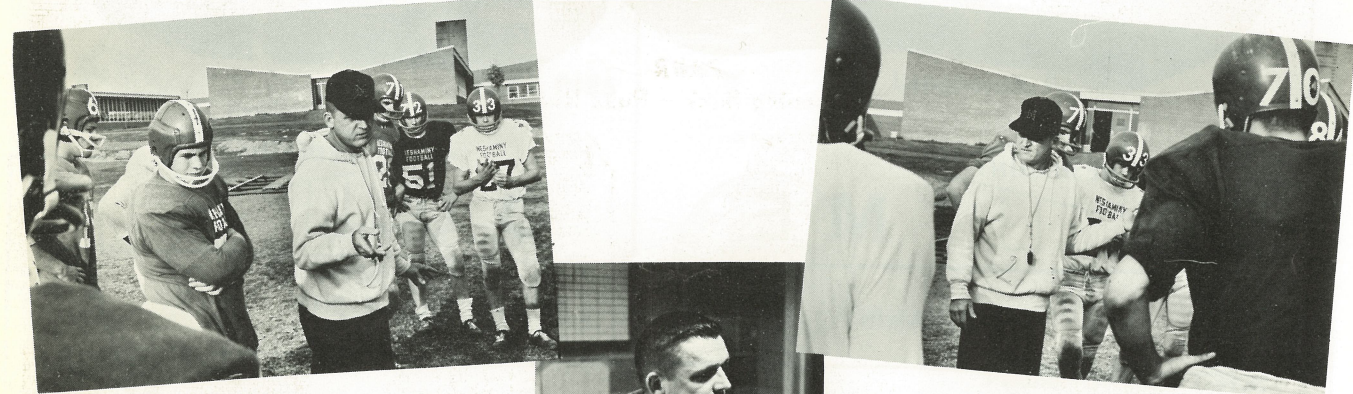
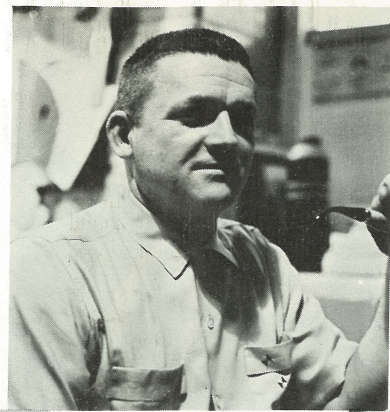
Other opponents included Binghamton North, Elmira, Southside, Ithaca, Binghamton Central and Rochester Aquinas.

The Wildcats are also members of the Triple Cities League which includes members of the Southern Tier Conference.

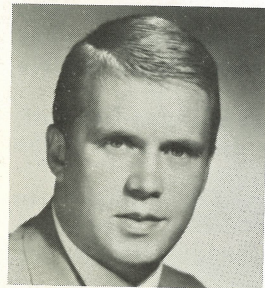
In five seasons, Diller has produced 27 all-league choices and had three players make the All-Central New York State team.

So Redskin fans who have raised the question, "Is Johnson City loaded?" will soon find out when TIME IS IN

OUR FOOTBALL STAFF



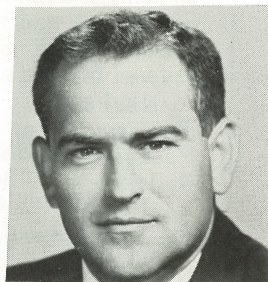
COACH CORDELLI
Defensive Backfield
Offensive Blocking



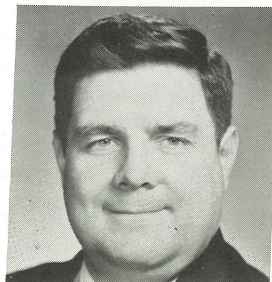
COACH HART
Defensive Linebackers
Defensive Guards



COACH GREYTOK - J.V. Coach



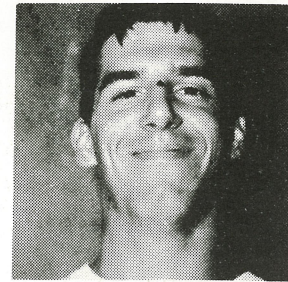
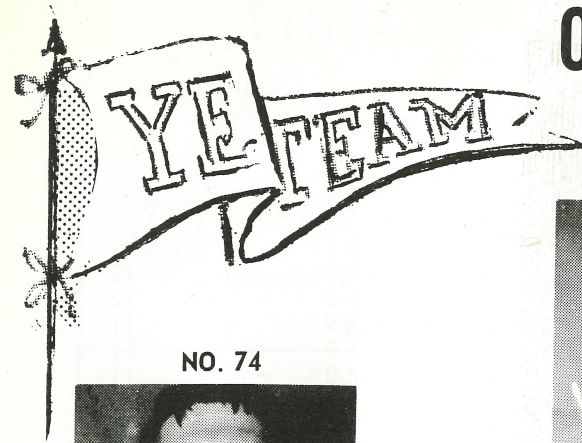
COACH SWARTZ
Offensive Backfield
Passing and Kicking Game



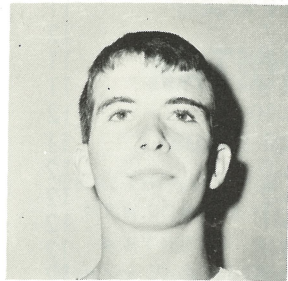
COACH SMITH
J.V. Coach

Coach Petercuskie AND HIS RIGHT ARMS

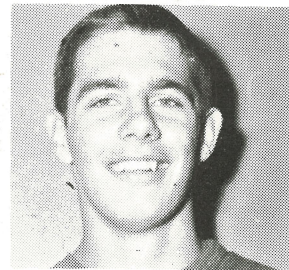
OUTSTANDING PLAYERS Bethlehem Game



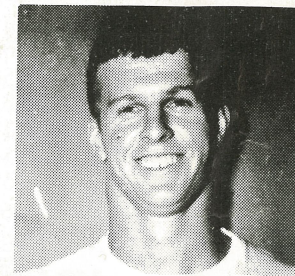
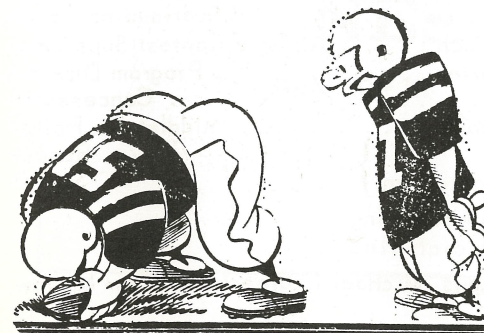
VOSBURGH
Fine Blocking



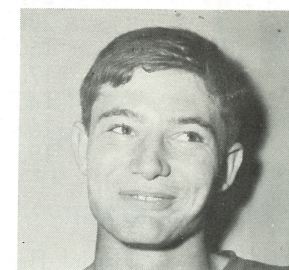
SETTLES
Sophomore Standout



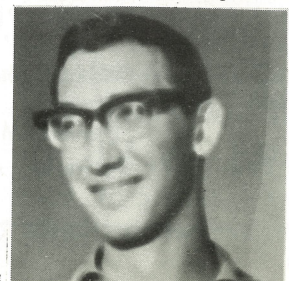
NO. 65 WALKER
Center



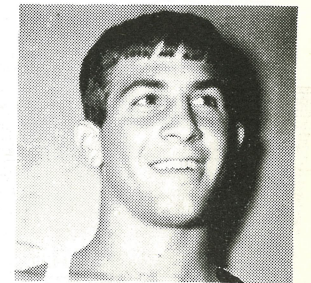
BARR
Fine Running Back - Pass Receiver



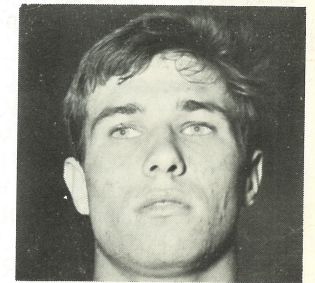
HOFFMAN
Middle Guard



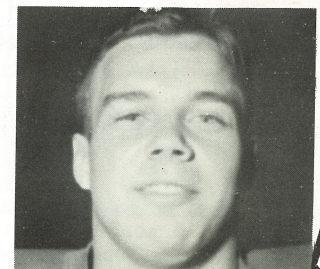
STEVE EDELL
Assistant Manager



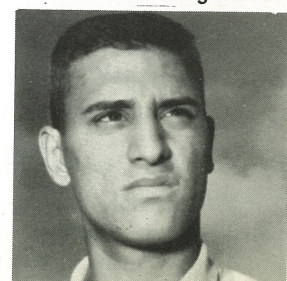
ROTOLO
Defense and Offense



PASQUINE
Defensive Stand Out



NO. 34 MADDEN
Defense



CHARLES BOWERS
Head Manager



1965 Redskins' Roster & Staff

COLORS: RED AND BLUE

NO.	NAME	POSITION	WGT.	HGT.	GRADE
30	CUNNINGHAM, ANDREW	B	150	5-9	11
31	THOMPSON, THOMAS	B	170	5-8	11
32	DAENZ, WILLIAM	B	145	5-9	10
33	McHALE, RICHARD	E	165	5-11	12
34	MADDEN, STEPHEN	B	150	5-6	12
35	COLBERT, JAMES	B	185	6-2	12
36	MUNSKI, THOMAS	B	180	5-9	11
37	BECCONE, THOMAS	G	150	5-9	11
38	FORCHETTI, ERNIE	B	160	6-0	11
39	RYDER, PAT	B	160	5-11	12
40	ROTOLO, ROBERT	B	185	5-10	12
41	PASQUINE, GARRY	B	150	5-8	11
42	RAKITA, DAVID	B	150	5-9	11
43	McHALE, ALAN	B	170	5-10	11
44	FOLEY, RICHARD	B	175	5-10	12
45	JAY, ALAN	B	160	5-8	11
46	VOSBURGH, GREG	B	165	6-2	10
47	BARR, GERALD	B	170	6-0	12
48	SETTLES, RICHARD	B	165	6-2	10
49	DeMEZZA, FRANK	E	170	5-10	11
50	NOLTE, GEORGE	E	155	5-10	11
51	SWENSON, WILLIAM	G	175	5-10	12
52	SPADACCINO, SAMMY	G	170	6-1	10
53	PULAK, LARRY	G	170	5-6	11
54	HOFFMAN, HARRY	C	185	6-2	11
60	CIAMBRELLO, JOSEPH	C	160	5-7	12
61	GEYER, JOHN	T	170	5-10	11
62	YOUNG, BOB	T	170	5-10	11
63	IVINS, DAVID	T	185	5-10	12
64	WOODRUFF, DAVID	T	170	6-1	11
65	WALKER, WILLIAM	C	220	6-0	12
70	BRYAN, DENNIS	T	180	6-2	12
71	LOBLEY, JAMES	T	200	6-1	12
72	WHITEHURST, STEPHEN	T	200	5-9	12
73	SCHILLER, CARL	T	210	6-2	12
74	VOSBURGH, PETER	T	200	6-0	12
75	SAUERBRY, BRUCE	T	215	6-4	12
80	ELSWICK, BILL	T	217	6-5	11
81	WHITEMAN, STEPHEN	T	200	6-0	12
82	CHYCHOTA, RAYMOND	G	160	5-7	12
83	SCHMIDT, CHARLES	G	170	5-7	11
84	KELCH, CHARLES	G	145	5-9	10
85	CONGER, FRED	G	160	5-11	11
			195	6-0	12

NESHAMINY STAFF

Dr. Oliver S. Heckman . . . Superintendent of Schools	Frank Penn Trainer
Dr. Kenneth E. King Principal of High School	Dr. D. J. Brodie Team Physician
Stanley Howell Ass't. Principal of High School	James Crossland Band Director
Harry E. Franks Ass't. Principal of High School	Cecilia Greytok Majorettes and Color Guard
Richard Howard Ass't. Principal of High School	Howard Troxell Announcer
John Petercuskie Head Coach	Darlene Helicke Cheerleading Coach
John Swartz Ass't. Coach	Andrew Pecuch Athletic Contest Supervisor
Peter Cordelli Ass't. Coach	George O'Brien Program Director
Robert Hart Ass't. Coach	"Jaycees" Concessions
Joseph Greytok J.V. Ass't. Coach	Howard Shook Middletown Police
Richard Smith J.V. Ass't. Coach	Trevose Rescue
	Penndel-Middletown } Squads

STUDENT MANAGERS: Charles Bowers, Steve Edell, John Detweiler, Andrew King

ATHLETIC COUNCIL OF SCHOOL

Board of Education - Chairman, Charles Kelch, Lee Merrick, Harold Riggs, Michael Czarnecki, William Morrow, Rev. William R. McKean.

SKyline 7-2161
WI 3-2526

*Langhorne Gardens
Flower Shoppe*



FLOWERS FOR ALL OCCASIONS

Lincoln Highway, Langhorne R.D. 1, Pa.

Werner Frentrop, Prop.



COMPLIMENTS OF
LYLE SCHWALM

**SKYLINE AGENCY,
Inc.**

COMPLETE REAL ESTATE SERVICES

TAX ACCOUNTING

SK 7-5124

Route 1, Penndel, Pa.

**Spat's
Tomato Pies** PENNDEL,
PA.

Open Every Nite
except TUES.

Home Delivery

Call SK 7-2778



**ROLLINS
ESSO SERVICE**



Bellevue Avenue and
Superhighway - Langhorne
SK 7-9184

Route 1 - Penndel - SK 7-9282

**CENTRAL-PENN
NATIONAL BANK**

BUCKS COUNTY OFFICES

FEASTERVILLE • LANGHORNE • LEVITTOWN

NEWTOWN • MORRISVILLE • PENNDEL

• STREET ROAD, SOUTHAMPTON •

Member Federal Deposit Insurance Corporation



SKYLINE 7-4928

REAL ESTATE

117 N. BELLEVUE AVE. LANGHORNE, PA.

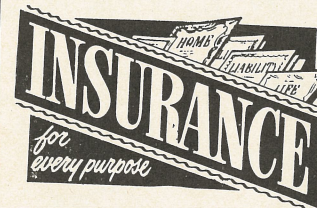
BETTY STARR

MARIE G. SMITH

IRMA DE FREHN

ELIZABETH GISH

**Weed Insurance
Agency**



MIDDLETOWN

SHOPPING

CENTER

Langhorne, Pa.

Windsor 3-4020

U.S. #1
RR
SUPER HWY.
MAPLE
BELLEVUE AV.

**CHRYSLER
PLYMOUTH
VALIANT**

J.W. DAVENPORT

LANGHORNE,
PENNA.

MAPLE AVE & PINE • LANGHORNE

SKyline 7-5141

PARENTS and FRIENDS

SUPPORT YOUR ATHLETIC BOOSTER CLUB

NESHAMINY N CLUB

JOIN NOW !!!

\$2.00 PER YEAR

Films and Refreshments Every Monday Night

High School Cafeteria - 7:30 P.M.

ALL ARE WELCOME

Call Harold Odell, WI 5-5131 or Charles Barr, WI 5-1059

ENJOY THE GAME

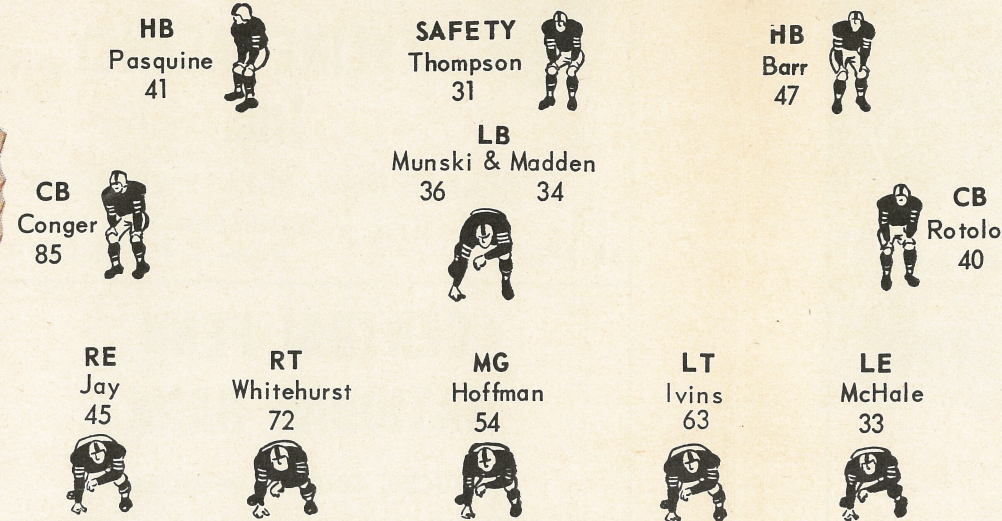


things go better with **Coke**

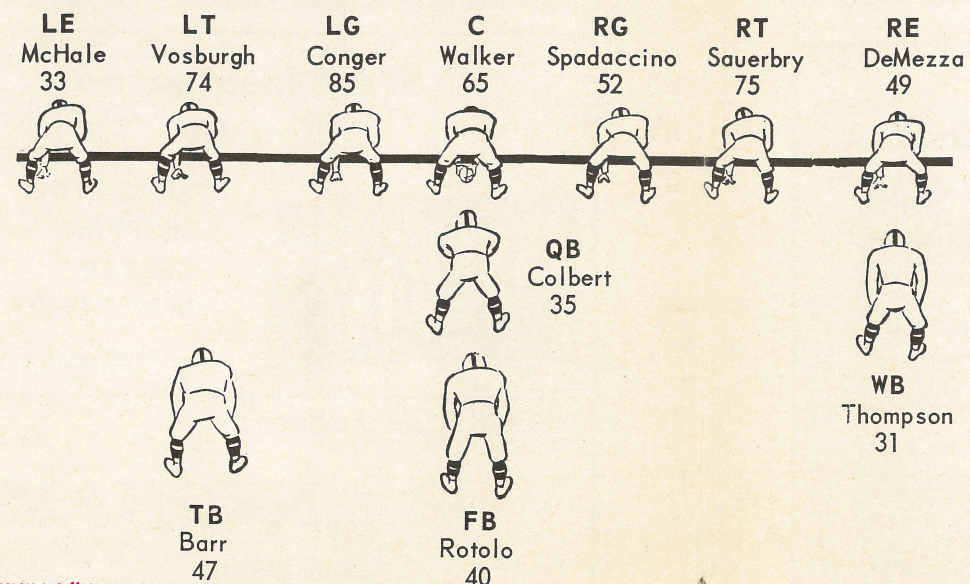


Enjoy the pause that refreshes with ice cold Coke

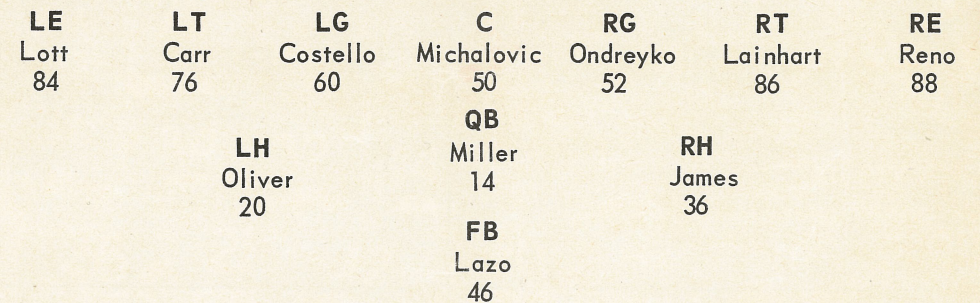
NESHAMINY SENIOR HIGH SCHOOL Probable Starting Line-Up - Defense



Probable Starting Line-Up - Offense

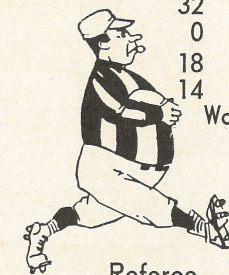


JOHNSON CITY HIGH SCHOOL Probable Starting Line-Up



JOHNSON CITY, N.Y. 1964 Grid Record

JOHNSON CITY	OPPONENT	SCORE
29	Binghamton North	0
0	Elmira Free Academy	7
0	Ithaca	0
0	Union-Endicott	48
32	Elmira Southside	6
0	Vestal High	55
18	Binghamton Central	0
14	Rochester Aquinas	6
Won - 4	Lost - 3	Tied - 1



OFFICIALS FOR TONIGHT'S GAME

Referee..... Wm. Budklen
 Umpire..... Chas. Ritinski
 Lines..... Jos. Reichwein
 Field Judge..... Ken Rozelsky



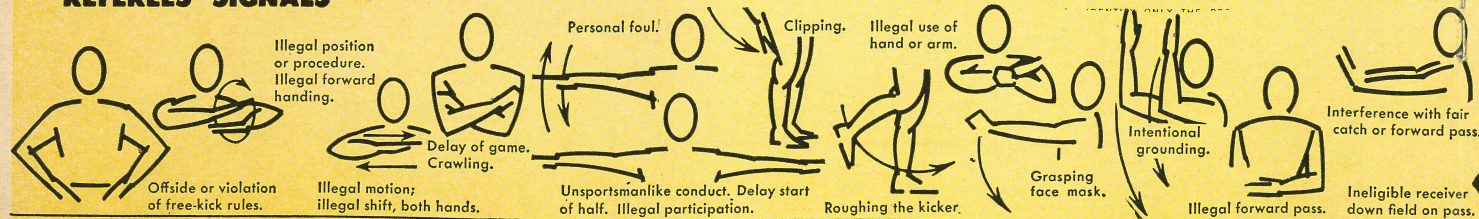
"Clara, this is one place you might at least admit I know what I'm talking about!"

NESHAMINY REDSKIN'S NEXT HOME GAME -

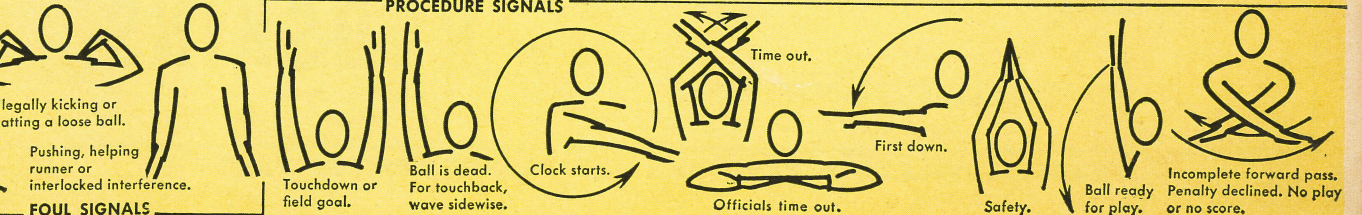
Altoona High School - Saturday Evening, November 6, 1965 - 8:00 PM

TEAMS	1	2	3	4	TOTAL
Johnson City High School					
Neshaminy High School					

REFEREES' SIGNALS



PROCEDURE SIGNALS



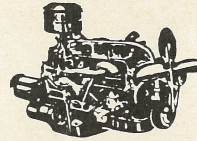
COCA-COLA AND **COKE** ARE REGISTERED TRADE-MARKS WHICH IDENTIFY ONLY THE PRODUCT OF THE COCA-COLA COMPANY.

GOOD LUCK, REDSKINS!!!

**BUCKS COUNTY
BEVERAGE CO.**

Penn del, Pa.

PHONE SKyline 7-5115
SODANO'S AUTO PARTS



COMPLETE MACHINE SHOP SERVICE
LINCOLN HIGHWAY AND HULMEVILLE AVE.
PENNDel, PENNA.



**TREVOSE FAMILY
SHOE STORE**

Specializing In
Cancellations & Rejects
Elmwood and Brownsville Road
Trevose Heights Trevose, Pa.
Phone ELmwood 7-0209



SHIELDS PHARMACY

**PRESCRIPTION
SPECIALISTS**

PHARMACY
TREVOSE

EL 5-1555

**pickering
printing**

- Catalogues
- Color Folders
- School Annuals
- Bindings
- Brochures
- Stationery

OFFSET PRINTING • SERVING BUCKS COUNTY

1506-08 FARRAGUT AVENUE

BRISTOL, PENNSYLVANIA **ST 8-3381**

ROLLERAMA SKATING RINK

"FUN FOR THE WHOLE FAMILY"

Route 413 and Newportville Road
Levittown, Penna.

Call WIndsor 9-2782 for Group and Party Rates

Artistry in flowers

Bellevue Floral Shop

From Our Own
Greenhouses . . .

828 BELLEVUE AVE
HULMEVILLE
SK 7-6560
SK 7-6654



CUSTOM DESIGNED PLASTIC
FLOWERS



Compliments of

**LANGHORNE
COUNTRY CLUB**

GOLF SWIMMING
North Bellevue Avenue

SKyline 7-9186 LANGHORNE

COMPLIMENTS OF FEASTERVILLE PLAZA MERCHANT'S ASSOCIATION

Good Luck

REDSKINS

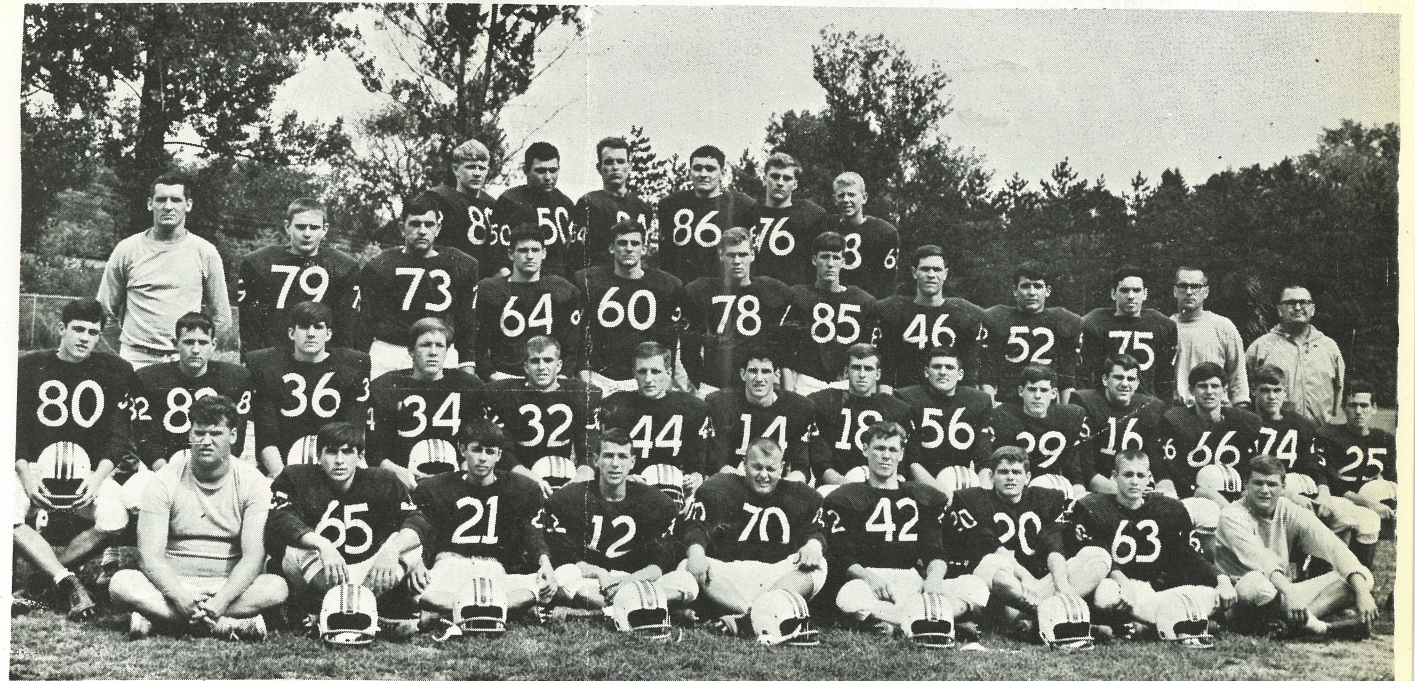
FEASTERVILLE, PENNSYLVANIA

THANKS TO DeFREHN HARDWARE AND PENNDel MOTOR PARTS

JOHNSON CITY ROSTER

SCHOOL COLORS: Maroon and White

SCHOOL SIZE: 1100



The '65 Wildcats

Head Coach
Henry Diller

Ass't. Coaches
Paul Munley Bob McDevitt

1965 JOHNSON CITY WILDCAT VARSITY

12 SKONIECZKI, DAVE	QB	5-9	135	Jr.	65 LUTSIC, JIM	G	5-7	155	Jr.
14 *MILLER, BILL (Co-Capt.)	HB	5-10	165	Sr.	66 JENSON, LARRY	G	5-10	155	Jr.
	& QB				68 FANCHER, BILL	G	6-1	190	Sr.
16 *MITCHELL, RICK	HB & QB	6	190	Sr.	70 BARBA, LOUIS	C	5-7	231	Sr.
18 LASHIER, DAVID	QB	6-1½	150	Jr.	72 ROSS, JAMES	T	5-8	194	Jr.
20 OLIVER, DAVE	HB	5-8	150	Sr.	74 GRIFFITHS, BOB	G	5-10	175	Soph.
24 TUROCK, ROBERT	HB	5-7	110	Sr.	75 CLARK, JAMES	G	5-9	160	Jr.
25 LOY, TERRY	HB	5-8	150	Jr.	76 CARR, DONALD	T	6-3½	205	Jr.
29 BARBER, RONALD	HB	5-10	150	Jr.	78 HEKTOR, JAMES	T	6-1	170	Jr.
32 SMIDA, LOUIS	FB	5-7	171	Sr.	79 HEETER, DONALD	T	6-1	180	Jr.
34 METZER, DAN	FB	5-8	160	Jr.	80 WEGA, THOMAS	E	6	164	Jr.
36 *JAMES, RICK	FB	6	185	Sr.	81 HAMMOND, CHARLES	E	5-10	160	Soph.
42 CHAPMAN, RALPH	HB	5-9½	155	Jr.	82 MICHALOVIC, HENRY	E	5-10	160	Jr.
44 LESSO, RAY	HB	5-7	150	Jr.	84 *LOTT, ART	E & T	6-4	195	Sr.
46 LAZO, RONALD	HB	6	175	Sr.	85 SWEET, JAMES	E	6-1	150	Jr.
50 *MICHALOVIC, ALFRED	T	6-2	252	Sr.	86 *LAINHART, JAMES	T & E	6-4½	202	Sr.
52 ONDREYKO, TOM	C	5-10	166	Sr.	87 PRITCHARD, RUSSELL	E	6	175	Sr.
56 GRASSI, JOHN	C	6-1	202	Jr.	88 *RENO, TIM (Co-Capt.)	E	6-1½	181	Sr.
60 COSTELLO, ALLEN	G	6-1	170	Jr.	89 KNICKERBOCKER, RON	E	5-11	145	Jr.
62 MARTINKOVIC, DAVE	G	5-7	150	Sr.					
63 SHAUT, CHARLES	G	5-8	140	Soph.					
64 BERRY, JOHN	G	5-10	155	Jr.					

RACZKOWSKI, ROY, Manager
MITACEK, JOHN, Manager

KENNETH A. MYERS Superintendent
LYLE E. YOUNG Principal
KENNETH W. KINTNER Athletic Director
HENRY DILLER Head Coach
PAUL MUNLEY Assistant Coach
ROBERT McDEVITT Assistant Coach

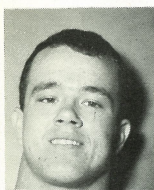
1965

NESHAMINY OFFENSIVE UNIT

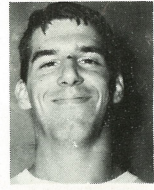
Skins

NESHAMINY - 41
 NESHAMINY - 7
 NESHAMINY - 33
 NESHAMINY - 19
 NESHAMINY - 7

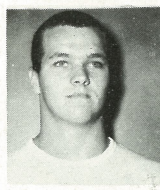
BISHOP EGAN - 0
 LASALLE - 0
 EASTON - 27
 WILLIAM ALLEN - 7
 DIERUFF - 7



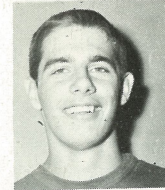
McHale - 33



Vosburgh - 74



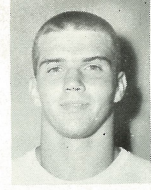
Conger - 85



Walker - 65



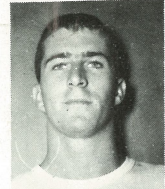
Spadaccino - 52



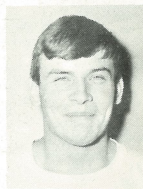
Sauerbry - 75



DeMezza - 49

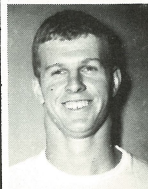


Colbert - 35

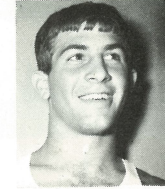


Thompson - 31

GAME STATISTICS	Nesh	Vis.
First Downs		
Passing		
Rushing		
Passes Attempted		
Passes Completed		
Passes Intercepted		
Fumbles		
Fumbles Recov. (Own)		
Fumbles Recov. (Opp)		
Punts		
Penalties		
Time Outs		



Barr - 47

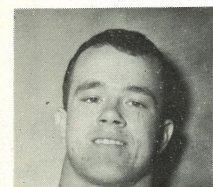


Rotolo - 40

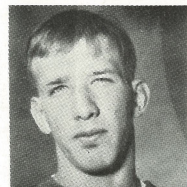
REMAINING CHALLENGE FOR 1965

Oct. 23	8:15	Johnson City	H
Oct. 30	2:00	Tennent	A
Nov. 6	8:00	Altoona	H
Nov. 12	8:15	Pennsbury	H
Nov. 19	8:15	Wilson	A

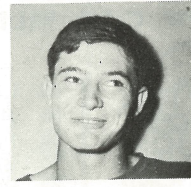
NESHAMINY DEFENSIVE SAVAGES



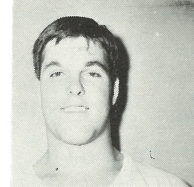
McHale - 33



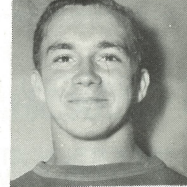
Ivins - 63



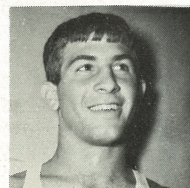
Hoffman - 54



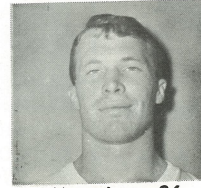
Whitehurst - 72



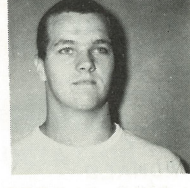
Foley - 44



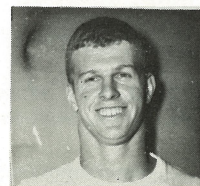
Rotolo - 40



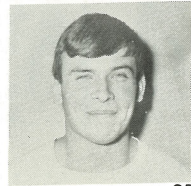
Munki - 36



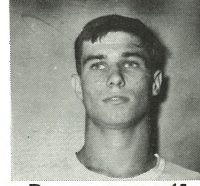
Conger - 85



Barr - 47



Thompson - 31



Pasquine - 41

NESHAMINY - 34
 NESHAMINY - ?

BETHLEHEM - 0
 JOHNSON CITY - ?

VARSITY CHEERLEADERS . . .



Pam Thompson, Bonnie Franks, Janet Wolf, Becky Howell,*Jeanie Hermann, Diane Robertson, Lynn Veeseon, Karen Huber, Connie Gimbel, Linda Lukens.

* Captain



MAJORETTES . . .

Terry Stockslager, Marilyn Solvay, Sharon Keller, Adele Fizzano, Jeanie Shatto, Janice Nedal, Peggy Slaughter, Mary Ann Transue, Captain.



Winter Sports at Neshaminy

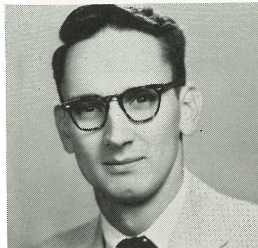


DORIS M. PRESTO
GIRLS'
BASKETBALL COACH
1964-65 RECORD
Won 7 Lost 1 Ties 0

BASKETBALL - GIRLS 1965-66 SCHEDULE

Friday, December 10	Central Bucks	A
Friday, December 17	Hatboro	H
Thursday, January 6	Pennsbury	A
Thursday, January 13	William Tennent	H
Thursday, January 20	Lower Moreland	H
Thursday, January 27	Bensalem	A
Thursday, February 3	Morrisville	A
Tuesday, February 8	Council Rock	H
Thursday, February 10	Bristol	H
Thursday, February 17	Woodrow Wilson	A

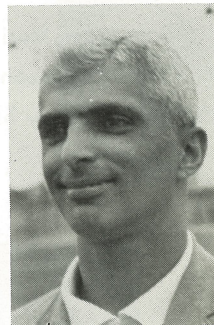
BOWLING 1966 SCHEDULE



RICHARD PRIZER
BOWLING COACH
1965 RECORD
Won 9 Lost 2 Ties 1

Tues., Jan. 4	W. Wilson	A
Thurs., Jan. 6	Wm. Tennent	A
Tues., Jan. 11	Morrisville	H
Thurs., Jan. 13	Bristol	H
Thurs., Jan. 20	W. Wilson	H
Tues., Jan. 25	Wm. Tennent	H
Thurs., Jan. 27	Morrisville	A

1964-65 RECORD
Won 11 Lost 1 Ties 0
*L.B. C. L. CHAMPS -
1964 - 65



JOEL BABA
GYMNASTIC COACH

BASKETBALL 1965-66 SCHEDULE

Tuesday, November 30	Pottstown	H
Friday, December 3	Bethlehem	H
Tuesday, December 7	Bishop Egan	A
Friday, December 10	William Tennent	H
Tuesday, December 14	Lower Moreland	H
Friday, December 17	Woodrow Wilson	A
Tuesday, December 21	Riverside	A
Thursday, December 23	Morrisville	H
Tuesday, January 4	Bristol	A
Friday, January 7	Council Rock	H
Tuesday, January 11	Pennsbury	H
Friday, January 14	Bensalem	A
Friday, January 21	Woodrow Wilson	H
Friday, January 28	William Tennent	A
Tuesday, February 1	Bristol	H
Friday, February 4	Council Rock	A
Tuesday, February 8	Pennsbury	A
Friday, February 11	Bensalem	H
Tuesday, February 15	Morrisville	A
Friday, February 18	Lower Moreland	A

WRESTLING 1965-66 SCHEDULE

Sat., Dec. 4	Allentown Dieruff	H	Wed., Jan. 26	Council Rock	H
Thurs., Dec. 9	Bethlehem	H	Sat., Jan. 29	Phillipsburg	H
Thurs., Dec. 16	Notre Dame	A	Thurs., Feb. 3	Bethlehem Cath.	A
Wed., Jan. 5	Hunterdon Cen.	A	Sat., Feb. 5	Wm. Tennent	H
Wed., Jan. 12	Lw. Moreland	A	Wed., Feb. 9	Wm. Allen	H
Sat., Jan. 15	Easton	H	Sat., Feb. 12	W. Wilson	A
Wed., Jan. 19	Pennsbury	H	Fri., Feb. 18	Sectionals	
Sat., Jan. 22	Bensalem	A	Sat., Feb. 19	Sectionals	

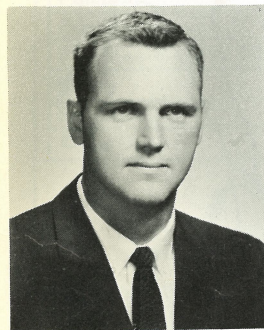
CHRIS POFF VARSITY WRESTLING COACH Won 7 Lost 4 Ties 0

ED BURNS
HEAD SWIMMING COACH
BOYS

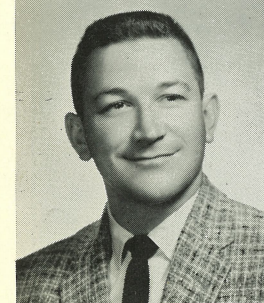
1964-65 RECORD
Won 7 Lost 4 Ties 0

ELEANOR LORENC
HEAD COACH
SWIMMING - GIRLS

1964 RECORD
Won 8 Lost 0 Ties 0



GEORGE O'BRIEN
HEAD
BASKETBALL COACH
1964-65 RECORD
Won 16 Lost 7 Ties 0



ELmwood 7-0563
349 BUSTLETON AVE.
FEASTERVILLE

AFTER THE GAME . . .

MEET THE GANG AT



ROUTE 1, LANGHORNE, PENNA.
SK 7-3764

STRATHMANN SUPPLY COMPANY

L U M B E R

340 Street Road, Southampton, Penna.
25 Bustleton Pike, Feasterville, Pa.
2 Yards to Serve You

EL 7-9292

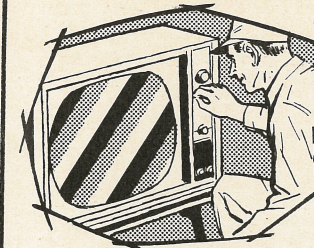
EL 7-3940



Route 413 -
Just North of the
Turnpike

and

8901 Frankford
Avenue, Phila.



TREVOSE T.V. & ELECTRONICS

AMATEUR RADIO &
C.B. HEADQUARTERS

U.H.F. CONVERTORS AND ANTENNAS

"We Sell the Best and Service the Rest"

ELmwood 7-1400

SKyline 7-5300

Compliments of

FEENEY'S NURSERY

Feasterville, Pa.



7751 NEWPORTVILLE ROAD
Windsor Shopping Center
P.O. BOX 352
LEVITTOWN, PA.

. Industrial
. Commercial
. Residential

Compliments of

BUCK HOTEL



Bustleton and
Bridgetown Pikes

Feasterville
Pennsylvania



NESHAMINY JAYCEES

COMMUNITY DEVELOPMENT AND LEADERSHIP TRAINING

YOUNG MEN - 21 TO 35

JOIN NOW!!!!!!

2 NESHAMINY SCHOLARSHIPS - BENEFIT OF CONCESSIONS

Call Lee Conrad, WI 6-4615

Write P.O. Box 685, Levittown, Pennsylvania

HOME UNITY SAVINGS

and Loan Association

SKYROCKET YOUR SAVINGS WITH

4 1/4%

CURRENT DIVIDEND PER ANNUM

FOUNDED 1866



\$100,000,000
ASSETS

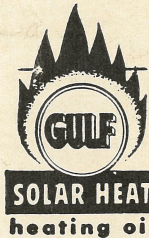
201 S. Bellevue Avenue, Langhorne, Pa.

Phone — SKYline 7-2222

Main Office: 4806 Frankford Ave., Phila., Pa.

THE MOST

Clean Heat, Comfort, Per Gallon



Order From Us . . .

JESSE E. TERRY, INC.

FEASTERVILLE, PENNSYLVANIA

ELmwood 5-1000

CHEVROLET
CHEVELLE CHEVY II
CORVAIR CORVETTE CHEVY TRUCKS
IMPERIAL CHRYSLER PLYMOUTH
VALIANT SIMCA
DODGE DART RAMBLER RENAULT
DODGE TRUCKS

ACRES AND ACRES
OF NEW AND USED CARS AND TRUCKS

WORLD'S LARGEST AUTOMOBILE DEALER

REEDMAN Corporations

U.S. Route 1

Langhorne, Pa.

SK 7-4961

Service and Parts Department open from 8:00 a.m.
to 2 o'clock in the morning.

Visit Reedman's 80-acre, multi-million dollar automobile center
5,000 passenger car and truck inventory at most times.

TREVOSE

SAVINGS
AND LOAN ASSOCIATION

Street and Brownsville Roads, Trevoise
Trenton & Pennsylvania Aves., Morrisville
2307 Bristol Pike, Cornwells Heights

ELmwood 7-6700



Assets Over \$43,000,000.00

50 Years of Liberal Dividends!

"Bucks County's Original Insured Association Serving
Delaware Valley, U.S.A."