

NESHAMINY JOINT SCHOOL DISTRICT

NESHAMINY SENIOR HIGH SCHOOL STADIUM  
LEWISBORNE, PENNA.

OFFICIAL SOUVENIR  
PROGRAM - 25 CENTS

# NESHAMINY HIGH SCHOOL REDSKINS

VS.

# DIERUFF HIGH SCHOOL HUSKIES

|   |    |
|---|----|
| Alma Mater . . . . .                            | 2  |
| Time Out . . . . .                              | 2  |
| Redskin Coaches - Team Picture . . . . .        | 3  |
| Outstanding Players - Wm Allen . . . . .        | 4  |
| Redskin Roster and Staff . . . . .              | 5  |
| Neshaminy Line-Up . . . . .                     | 7  |
| Dieruff Line-Up . . . . .                       | 8  |
| Dieruff Roster and Staff . . . . .              | 10 |
| Dieruff Team Picture . . . . .                  | 11 |
| Neshaminy Offensive & Defensive Teams . . . . . | 12 |
| A Salute to the Sophomore Class . . . . .       | 13 |

FRIDAY EVENING, OCTOBER, 7, 1966, 8:15 P.M.

*Tom Keenan*

# Ed Carber's TAVERN

Where Everyone Meets  
After the Game . . . . .  
**BEER - LIQUOR and  
SANDWICHES  
PIZZA PIES**

**FOOTBALL  
1966 SCHEDULE**

|                |                 |   |
|----------------|-----------------|---|
| Fri., Sept. 9  | Bishop Egan     | H |
| Fri., Sept. 16 | LaSalle         | H |
| Fri., Sept. 23 | Easton          | H |
| Fri., Sept. 30 | Allentown Allen | H |
| Fri., Oct. 7   | Dieruff         | H |
| Fri., Oct. 14  | Bethlehem       | H |
| Fri., Oct. 21  | Woodrow Wilson  | H |
| Fri., Oct. 28  | William Tennent | A |
| Sat., Nov. 5   | Altoona         | A |
| Sat., Nov. 12  | Pennsbury       | A |

**COUNTRY CLUB  
SHOPPING  
CENTER**

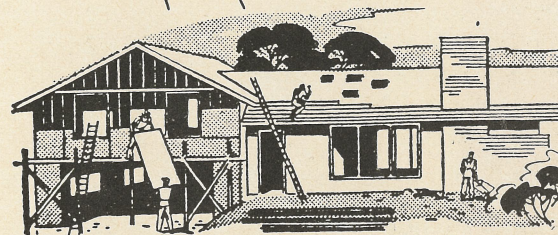
Windsor 3-1940

EL 7-1212  
EL 7-3700



OAKFORD, PENNA.

- LUMBER
- MILLWORK
- BUILDING MATERIALS
- HARDWARE
- FUEL OIL ● COAL



Open a Saving Account Now in Person or by Mail

SAVINGS MAKES THE DIFFERENCE

Savings Insured up to \$10,000

## LANGHORNE FEDERAL SAVINGS & LOAN ASSOCIATION

Langhorne, Pa.

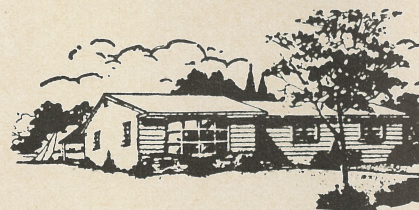


Phone: SKYline 7-5138

A. Paul Townsend, Jr., Secretary

COMPLIMENTS OF

## Sylvester & Keating, Inc.



REALTORS - INSURANCE

151 BELLEVUE AVENUE  
PENNDel, PENNSYLVANIA

SKYline 7-6988



### ALMA MATER

Neshaminy High School, true to the end  
Echoes forever, spirits ascend  
Honest endeavor, virtue and strife,  
Mem'ries still bring us the best years of our life.

Hail Alma Mater, hail red and blue  
Fellow Playwickians we salute you  
Fond recollections vivid and true,  
Neshaminy High School, we're loyal to you.

NESHAMINY

REDSKINS

TIME OUR

"REDSKINS ARE GREAT"

#### REVIEW #4

**WILLIAM ALLEN VS. NESHAMINY** . . . . . - Neshaminy played inspired football in its first home "Big6" contest last Friday night. The Redskins took command early in the second quarter on the passing of Quarterback Forchetti and the receiving of Right End DeMezza. Forchetti hit DeMezza with an 11 yard strike to open the scoring at 6-0. Following William Allen's failure to move the ball the Forchetti-DeMezza combination struck pay dirt again on a pass play covering 50 yards. Allen closed the gap to 12-6 with a 6 yard touchdown pass from Radcliffe to Pendry with just 1:30 left before intermission.

Following a scoreless third period both teams came to life in the fourth as Forchetti scored for the Redskins on a three yard run and a successful place kick made it 19-6 favor of Neshaminy. In the remaining nine minutes the Canaries gave Neshaminy a dose of that same spirit which neighboring Pennsbury had received a week before. Their drive covered 70 yards on the ground as Larry Clymer scored with 7:19 left on the clock--the extra point was good. Neshaminy 19-Wm. Allen 13. It took just three minutes for Allen to score again as Radcliffe uncorked a pass to Clymer who took it on the 15 yard line, broke away from two defenders and sprinted into the end zone.

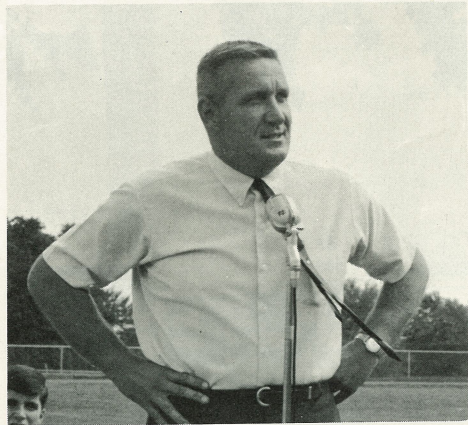
**Neshaminy 19-Allen 19.**

**WELCOME DIERUFF** --- the Skins face a crucial test tonight as we meet the Huskies from Allentown. Both teams have fallen before the Red Rovers of Easton; Neshaminy lost 13-0; Dieruff lost 27-7. Both teams are looking for that first Big "6" win to remain in contention for the title. No matter what the final score we are sure to see football at its finest as -- Time is in --

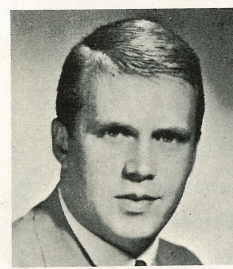
L  
O  
W  
E  
R  
  
B  
U  
C  
K  
S  
  
L  
E  
A  
G  
U  
E

B  
I  
G  
  
S  
I  
X  
  
L  
E  
A  
G  
U  
E

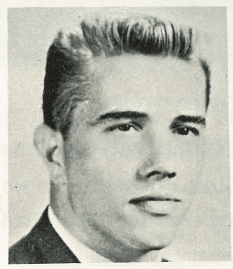
# REDSKIN COACHING STAFF



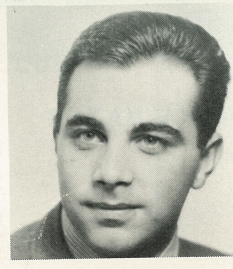
HEAD COACH McHUGH



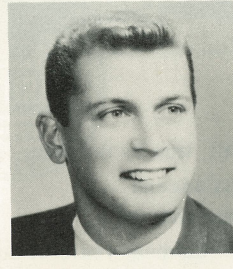
Coach Hart



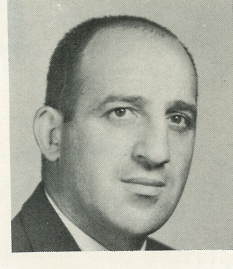
Coach Kirby



Coach Plumeri

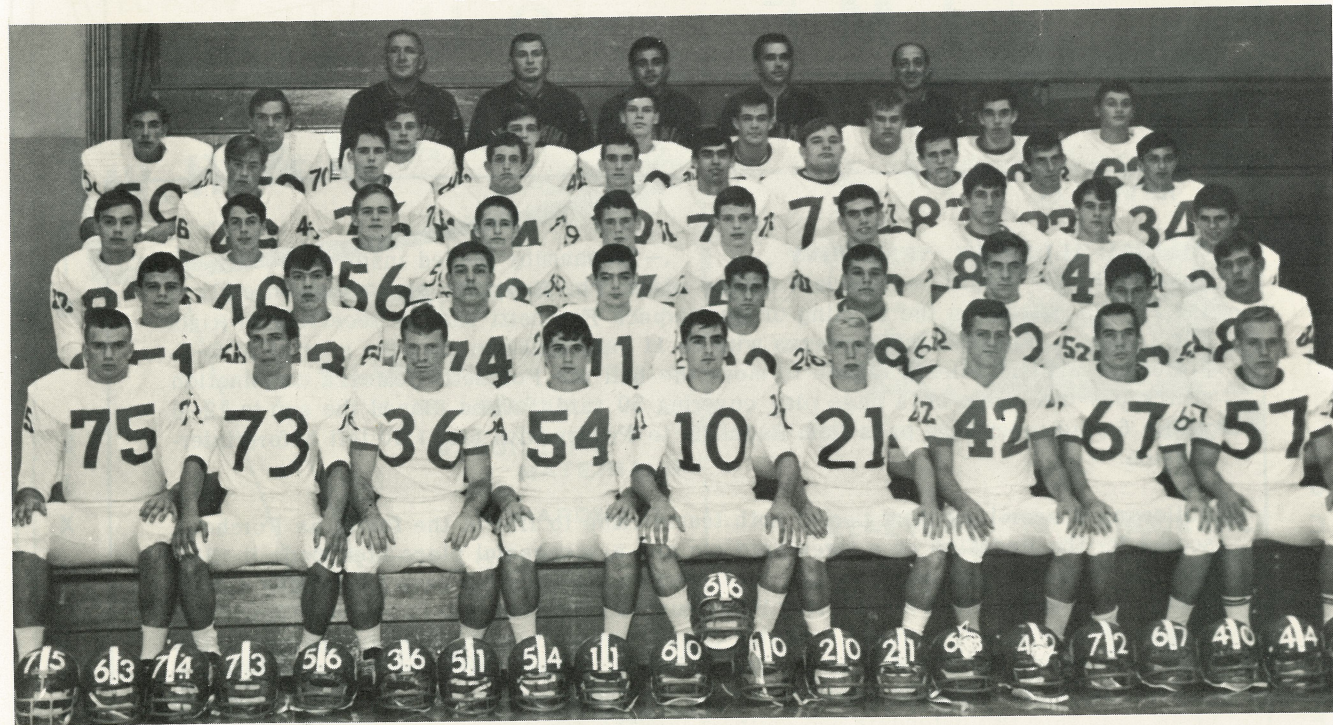


Coach Aceto



Coach Cordelli

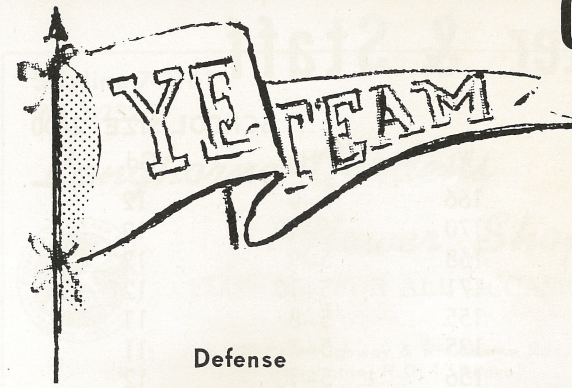
## 1966 Redskins



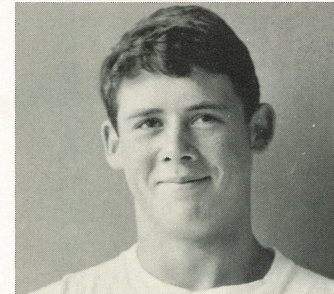
First Row: B. Sauerbry, D. Ivins, T. Munski, J. Ciambrello, E. Forchetti, A. Jay, D. Rakita, T. Beccone, R. Chychota  
 Second Row: R. Matlack, W. Clemens, L. Pulak, A. Cunningham, G. Pasquine, M. Bourandas, S. Spadaccino, F. DeMezza  
 Third Row: R. Reed, D. Houraham, C. Schmidt, W. Magill, W. Daenz, C. Nittsrover, W. Mahaney, W. Swenson, T. Prendergast, C. Johns  
 Fourth Row: J. Magier, B. Rider, M. Feinman, D. Mason, J. Gorski, B. Haines, J. Poland, G. Vosburg, B. Madden  
 Fifth Row: J. Oczkowski, F. Scott, J. Kulan, M. Spadaccino, J. Armour, P. Markman, T. Michaels, Rider, S. Worthington,  
 Coaches: T. McHugh, T. Aceto, J. Plumeri, J. Kirby, P. Cordelli

# OUTSTANDING PLAYERS

WM. ALLEN GAME

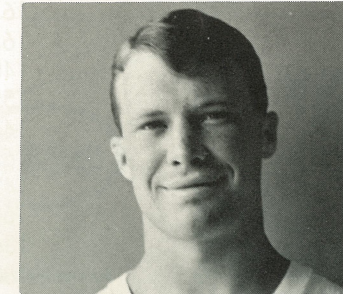


Defense



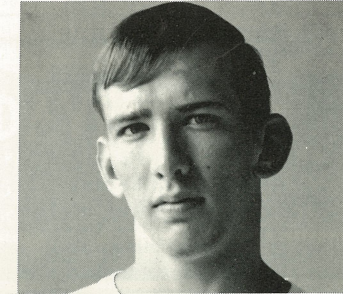
Deanz 37

Defense



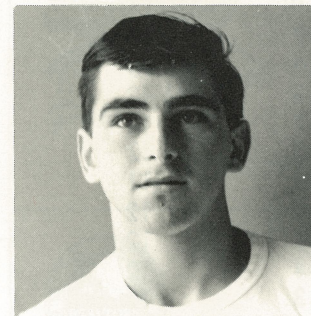
Munski 36

Defense



Ivins 73

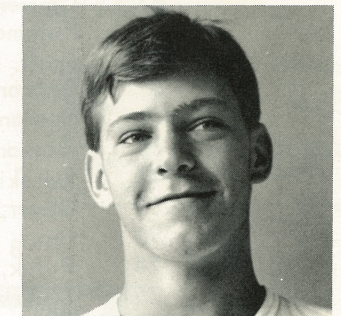
Offense



Forchetti 10

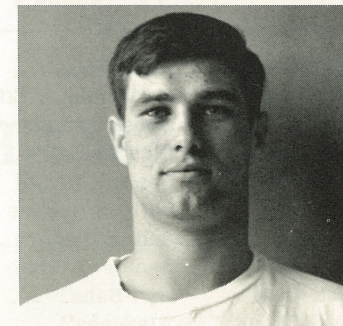


Offense



DeMezza 81

Defense 3 Interceptions



Pasquine 20



# 1966 Redskins' Roster & Staff

COLORS: RED AND BLUE

SCHOOL SIZE: 2400

| No. | Name              | Pos. | Wt. | Hgt. | Gd. |
|-----|-------------------|------|-----|------|-----|
| 10  | Forchetti, Ernie  | B    | 166 | 6-0  | 12  |
| 11  | Cunningham, Andy  | B    | 170 | 5-10 | 12  |
| 20  | Pasquine, Gary    | B    | 168 | 5-9  | 12  |
| 21  | Jay, Alan         | B    | 171 | 5-10 | 12  |
| 31  | Johns, Craig      | B    | 155 | 5-8  | 11  |
| 34  | Madden, Bruce     | G    | 135 | 5-7  | 11  |
| 36  | Munski, Tom       | B    | 156 | 5-10 | 12  |
| 37  | Daenz, Bill       | B    | 161 | 5-10 | 11  |
| 38  | Magill, Bill      | B    | 165 | 5-6  | 11  |
| 39  | Mason, Doug       | B    | 140 | 5-11 | 10  |
| 40  | Cloak, Bill       | B    | 155 | 5-8  | 11  |
| 41  | Kaminski, Don     | B    | 146 | 5-10 | 10  |
| 42  | Rakita, Dave      | B    | 161 | 5-10 | 12  |
| 44  | Prendergast, Tom  | B    | 143 | 5-7  | 11  |
| 46  | Magnier, Robert   | B    | 160 | 5-10 | 12  |
| 51  | Matlack, Bob      | C    | 186 | 5-11 | 12  |
| 52  | Spadaccino, Sam   | G    | 180 | 5-6  | 12  |
| 53  | Michael, Tim      | C    | 205 | 6-1  | 10  |
| 54  | Ciambrello, Joe   | C    | 182 | 5-10 | 12  |
| 55  | Markman, Pete     | G    | 184 | 6-0  | 10  |
| 56  | Schmidt, Charles  | G    | 166 | 5-11 | 11  |
| 57  | Chychota, Roy     | G    | 182 | 5-8  | 12  |
| 60  | Kulan, A          | C    | 160 | 5-8  | 10  |
| 61  | Nittsrover, Chuch | G    | 168 | 5-10 | 11  |
| 62  | McHale, Alan      | G    | 167 | 6-0  | 12  |
| 63  | Clemens, Bill     | G    | 190 | 5-10 | 12  |
| 64  | Feinman, Alex     | G    | 165 | 5-9  | 10  |
| 66  | Scott, Frank      | T    | 174 | 6-0  | 10  |
| 67  | Becone, Tom       | G    | 151 | 5-8  | 12  |
| 68  | Bourandas, Mike   | T    | 232 | 6-1  | 12  |
| 70  | Fizzano, Nick     | T    | 175 | 6-0  | 12  |
| 71  | Gorski, John      | E    | 151 | 6-2  | 11  |
| 72  | Geyer, John       | T    | 170 | 6-0  | 12  |
| 73  | Ivins, Dave       | T    | 167 | 6-2  | 12  |
| 74  | Pulak, Larry      | T    | 200 | 6-4  | 12  |
| 75  | Sauerbry, Bruce   | T    | 217 | 6-3  | 12  |
| 77  | Haynes, Bruce     | T    | 258 | 6-1  | 11  |
| 78  | Rider, Bryan      | T    | 175 | 5-10 | 11  |
| 80  | Mahoney, Bill     | E    | 162 | 5-11 | 11  |
| 81  | DeMezza, Frank    | E    | 182 | 6-0  | 12  |
| 82  | Reed, Bob         | E    | 170 | 6-1  | 11  |
| 83  | Vosburgh, Greg    | E    | 170 | 6-2  | 11  |
| 86  | Swenson, Bill     | E    | 178 | 6-2  | 11  |
| 87  | Poland, John      | E    | 148 | 6-0  | 11  |

## NESHAMINY STAFF

|  |   |
|--|---|
| Dr. Charles H. Bryan . . . . . Superintendent of Schools | Frank Penn . . . . . Trainer                        |
| Dr. Kenneth E. King . . . . . Principal of High School   | Dr. Gerold J. Effinger . . . . . Team Physician     |
| Stanley Howell . . . . . Ass't Principal of High School  | James Crossland . . . . . Band Director             |
| Harry E. Franks . . . . . Ass't Principal of High School | Barbara Ball . . . . . Majorettes & Color Guard     |
| Richard Howard . . . . . Ass't Principal of High School  | Howard Troxell . . . . . Announcer                  |
| Edwin Cunfer . . . . . Ass't Principal of High School    | Darlene Helicke . . . . . Cheerleading Coach        |
| Tom McHugh . . . . . Head Coach                          | Andrew Pecuch . . . . . Athletic Contest Supervisor |
| Peter Cordelli . . . . . Ass't Coach                     | George O'Brien . . . . . Program Director           |
| Robert Hart . . . . . Ass't Coach                        | Joel Baba . . . . . Equipment Manager               |
| Ted Aceto . . . . . Ass't Coach                          | "Jaycees" . . . . . Concessions                     |
| Joseph Kirby . . . . . J.V. Coach                        | Howard Shook . . . . . Middletown Police            |
| Joseph Plumeri . . . . . J.V. Coach                      | Trevoze, Middletown, Pennel . . . . . Rescue Squads |

Student Managers: Paul Mangold, Drew King, Walter Schoen

SKyline 7-2161  
WI 3-2526

*Langhorne Gardens*  
*Flower Shoppe*



FLOWERS FOR ALL OCCASIONS

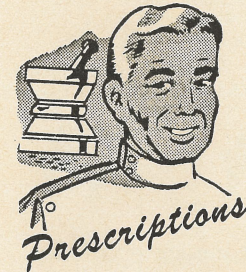
Lincoln Highway & Woodborne Rds.  
Langhorne, R.D. 1, Penna.

**ROLLINS**  
**ESSO SERVICE**



Bellevue Avenue and  
Superhighway - Langhorne  
SK 7-9184

Route 1 - Pennel - SK 7-9282



**IRWIN'S DRUG STORE**

THE PRESCRIPTION DRUG STORE

SKyline 7-2311

Langhorne, Pa.



COMPLIMENTS OF  
LYLE SCHWALM

**SKYLINE AGENCY,**  
**Inc.**

COMPLETE REAL ESTATE SERVICES

TAX ACCOUNTING

SK 7-5124

Route 1, Pennel, Pa.

**CENTRAL-PENN**  
**NATIONAL BANK**

8 BUCKS COUNTY OFFICES

Feasterville - Street Road . Feasterville - Bustleton Pike  
Langhorne . Levittown . Newtown

Morrisville . Pennel . Southampton

Member Federal Deposit Insurance Corporation

AUTHORIZED DEALER  **CHRYSLER**  
MOTORS CORPORATION

**DAVENPORT**

MAPLE & PINE STS. LANGHORNE, PA.

In 1965 - Celebrating Our 40th Year

OFFICIAL STATE INSPECTION STATION

**CHRYSLER**

**PLYMOUTH**

**VALIANT**

**SK 7-5141**

**Spat's**

*Tomato Pies*

PENNDL,  
PA.

Open Every Nite  
except TUES.

Home Delivery . . . . .

Call SK 7-2778



SKyline 7-4928

GLORIA



ARROW

*Real Estate*

117 N. Bellevue Ave.

Langhorne, Pa.

PARENTS and FRIENDS . . . . .

SUPPORT YOUR ATHLETIC BOOSTER CLUB

**NESHAMINY N CLUB**

JOIN NOW !!!

\$2.00 PER YEAR

Films and Refreshments Every Monday Night

High School Cafeteria - 7:30 P.M.

ALL ARE WELCOME

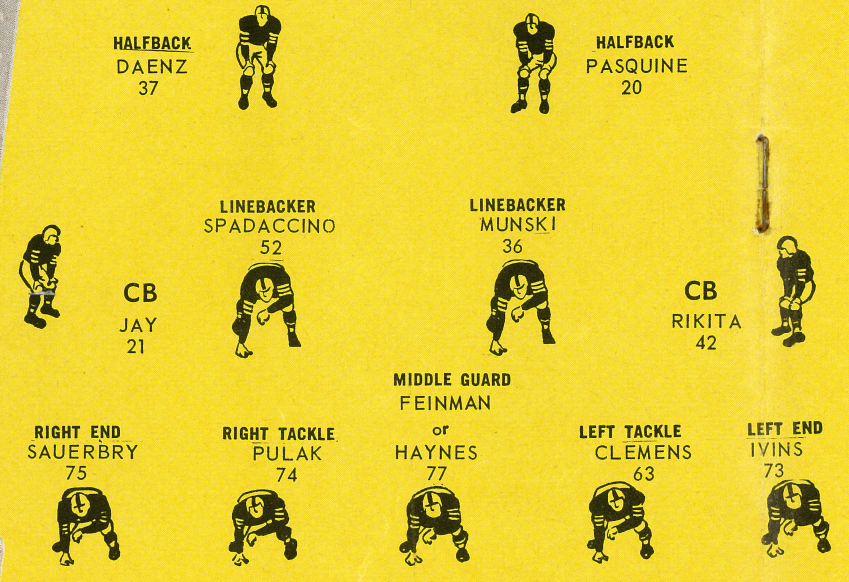
Call Charles Barr, CY 5-6531 or Ed Coffin, WI 6-4603

# WITH THE TASTE YOU NEVER GET TIRED OF

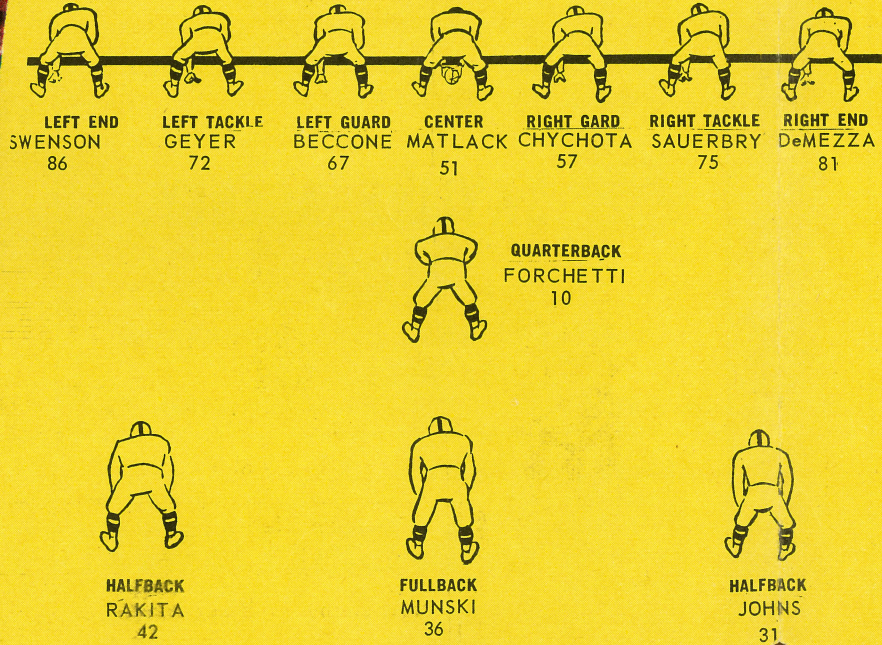


**ALWAYS REFRESHING,  
THAT'S WHY THINGS  
GO BETTER WITH COKE  
AFTER COKE  
AFTER COKE**

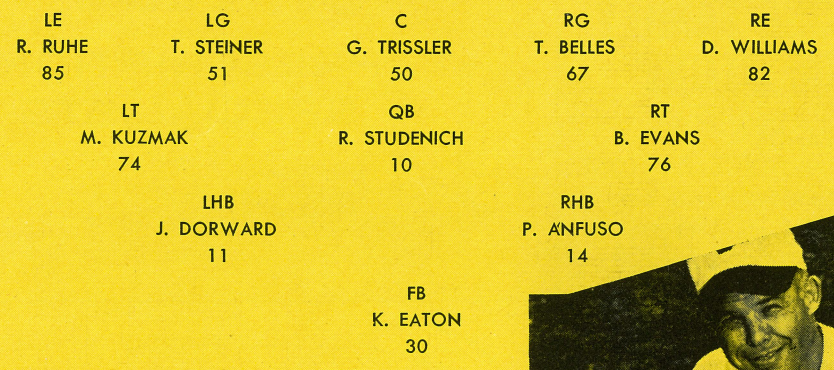
**NESHAMINY SENIOR HIGH SCHOOL  
Probable Starting Line-Up - Defense**



**Probable Starting Line-Up - Offense**



**DIERUFF**



**DIERUFF  
1966 Football Schedule**

|          |                        |       |
|----------|------------------------|-------|
| Sept. 9  | Palmerton.....         | Away  |
| Sept. 16 | Pennridge.....         | Away  |
| Sept. 23 | Woodrow<br>Wilson..... | Away  |
| Sept. 30 | Easton.....            | Home  |
| Oct. 7   | Neshaminy.....         | Away  |
| Oct. 15  | Pennsbury.....         | Away* |
| Oct. 21  | William Allen..        | Home  |
| Oct. 28  | Bethlehem.....         | Home  |
| Nov. 4   | Nazareth.....          | Home  |
| Nov. 11  | Phillipsburg....       | Home  |



**ERNIE WESCOE**  
Dieruff Head Coach

**OFFICIALS FOR  
TONIGHT'S GAME**

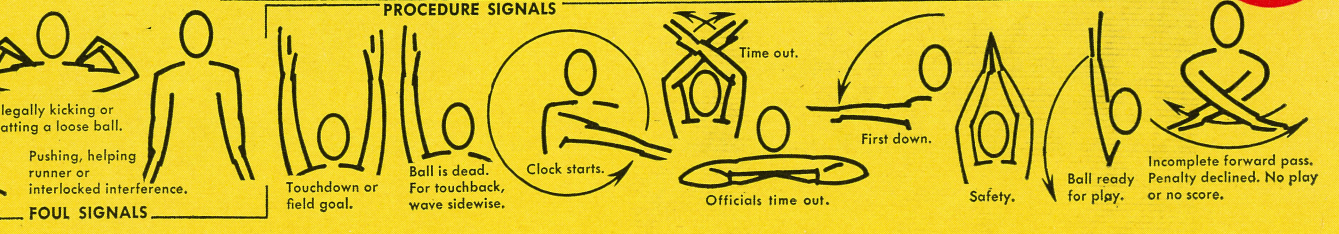
Referee . . . . . G. Bensing  
Umpire . . . . . W. Travis  
Lines . . . . . D. Guman  
Field Judge. . . . . A. Palozzi

**Redskins Next Home Game**  
Woodrow Wilson - Oct. 21, 1966 - 8:15 P.M.

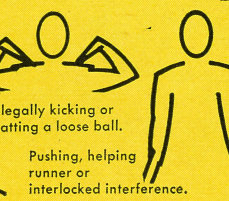
| TEAMS                         | 1 | 2 | 3 | 4 | TOTAL |
|-------------------------------|---|---|---|---|-------|
| Allentown Dieruff High School |   |   |   |   |       |
| Neshaminy High School         |   |   |   |   |       |



**REFEREES' SIGNALS**



**FOUL SIGNALS**



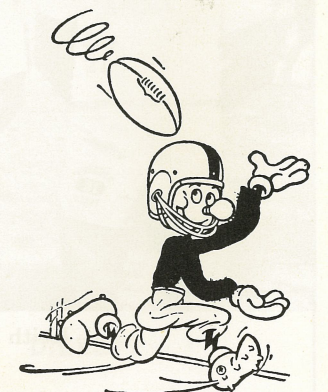
# Louis E. Dieruff Roster

| No. | Name              | Class | Hgt. | Wgt. | No. | Name             | Class | Hgt. | Wgt. |
|-----|-------------------|-------|------|------|-----|------------------|-------|------|------|
| 10  | R. Studenich, b.  | Sr.   | 5-08 | 168  | 63  | D. Fritchman, g. | Jr.   | 5-08 | 173  |
| 11  | J. Dorward, b.    | Sr.   | 5-08 | 150  | 64  | D. Montoney, g.  | Sr.   | 5-03 | 173  |
| 12  | D. Chies, b.      | Jr.   | 5-07 | 145  | 66  | F. Weierbach, g. | Sr.   | 5-05 | 188  |
| 14  | P. Anfuso, b.     | Sr.   | 5-07 | 155  | 67  | T. Belles, g.    | Jr.   | 5-09 | 175  |
| 15  | C. Callaway, b.   | Jr.   | 5-05 | 125  | 68  | C. Samuels, g.   | Sr.   | 5-04 | 148  |
| 16  | G. Sabo, b.       | Jr.   | 5-08 | 155  | 70  | C. Ahn, t.       | Sr.   | 6-00 | 232  |
| 17  | F. Benson, b.     | Jr.   | 5-07 | 170  | 73  | J. Rizzotto, g.  | Sr.   | 5-11 | 185  |
| 20  | D. Williamson, e. | Sr.   | 5-07 | 148  | 74  | M. Kuzmak, t.    | Jr.   | 5-11 | 170  |
| 22  | G. Stahler, b.    | Jr.   | 5-07 | 175  | 75  | F. Weaver, t.    | Sr.   | 5-10 | 182  |
| 24  | W. Kline, b.      | Sr.   | 5-05 | 143  | 76  | B. Evans, t.     | Sr.   | 5-11 | 215  |
| 26  | M. Kovach, b.     | Jr.   | 5-05 | 151  | 77  | C. Smith, t.     | Sr.   | 5-11 | 230  |
| 27  | J. Young, b.      | Jr.   | 5-06 | 148  | 78  | B. Christman, t. | Jr.   | 5-10 | 230  |
| 28  | J. Wenner, b.     | Jr.   | 5-09 | 172  | 80  | T. Howard, e.    | Sr.   | 5-09 | 166  |
| 29  | W. Farmer, b.     | So.   | 5-03 | 155  | 81  | G. Houser, e.    | Jr.   | 5-10 | 176  |
| 30  | K. Eaton, b.      | Sr.   | 5-09 | 158  | 82  | D. Williams, e.  | Sr.   | 6-00 | 185  |
| 50  | G. Trissler, c.   | Sr.   | 5-10 | 202  | 83  | W. LaFaver, e.   | Sr.   | 5-09 | 175  |
| 51  | T. Steiner, c.    | Jr.   | 5-09 | 184  | 84  | R. Sebesta, e.   | Jr.   | 5-08 | 158  |
| 52  | R. Trinkle, c.    | Sr.   | 5-11 | 180  | 85  | R. Ruhe, e.      | Sr.   | 5-09 | 177  |
| 53  | T. Krasley, c.    | Jr.   | 5-08 | 167  | 86  | G. Legath, e.    | Jr.   | 5-10 | 168  |
| 60  | D. Dorward, g.    | Jr.   | 5-07 | 158  | 87  | J. Harris, e.    | Jr.   | 5-08 | 156  |
| 61  | J. Leitgeb, g.    | Jr.   | 5-05 | 148  |     | D. McMullen, g.  | Jr.   | 5-10 | 152  |
| 62  | R. Sekoch, g.     | Jr.   | 5-08 | 145  |     |                  |       |      |      |



### DIERUFF STAFF

- Dr. Paul J. Fink . . . . . Superintendent
- Henry J. Weidner . . . . . Principal
- Paul B. Esser . . . . . Athletic Director
- Ernest Wescoe . . . . . Head Coach
- Tom Wargo . . . . . Assistant Coach
- Mike Meilinger . . . . . Assistant Coach
- Dick Tracy . . . . . Assistant Coach
- Keith Newhard . . . . . Assistant Coach
- John Warmkessel . . . . . Trainer
- Richard Garger . . . . . Equipment Manager



GOOD LUCK, REDSKINS!!!

**BUCKS COUNTY BEVERAGE CO.**

Penndel, Pa.

**SODANO'S AUTO PARTS**

COMPLETE MACHINE SHOP SERVICE  
LINCOLN HIGHWAY AND HULMEVILLE AVE.  
PENNDL, PENNA.  
SKyline 7-5115 Windsor 5-2444

**TREVOSE FAMILY SHOE STORE**

SPECIALIZING IN FAMOUS BRANDS - CANCELLATIONS

Elmwood and Brownsville Road  
Trevose Heights Trevose, Pa.  
Phone ELMwood 7-0209

**SHIELDS PHARMACY**

**PRESCRIPTION SPECIALISTS**

PHARMACY TREVOSE

EL 5-1555

**DUNKIN' DONUTS**

ARE DELICIOUS

ROUTE 413, LEVITTOWN, PA.  
NEAR NEWPORTVILLE ROAD

BUSTLETON PIKE  
NEAR STREET ROAD  
FEASTERVILLE, PA.

**BOTH OPEN 24 HOURS**

Compliments of

**LANGHORNE COUNTRY CLUB**

GOLF . . . . . SWIMMING

North Bellevue Avenue

SKyline 7-9186 LANGHORNE

**ROLLERAMA SKATING RINK**

"FUN FOR THE WHOLE FAMILY"

Route 413 and Newportville Road  
Levittown, Penna.

Call 949-2782 for Group and Party Rates

Artistry in flowers . . . .

**Bellevue Floral Shop**

From Our Own Greenhouses . . . .

828 BELLEVUE AVE  
HULMEVILLE  
SK 7-6560  
SK 7-6654

CUSTOM DESIGNED PLASTIC FLOWERS

COMPLIMENTS OF FEASTERVILLE PLAZA MERCHANT'S ASSOCIATION

**Good Luck**

**REDSKINS**

FEASTERVILLE, PENNSYLVANIA

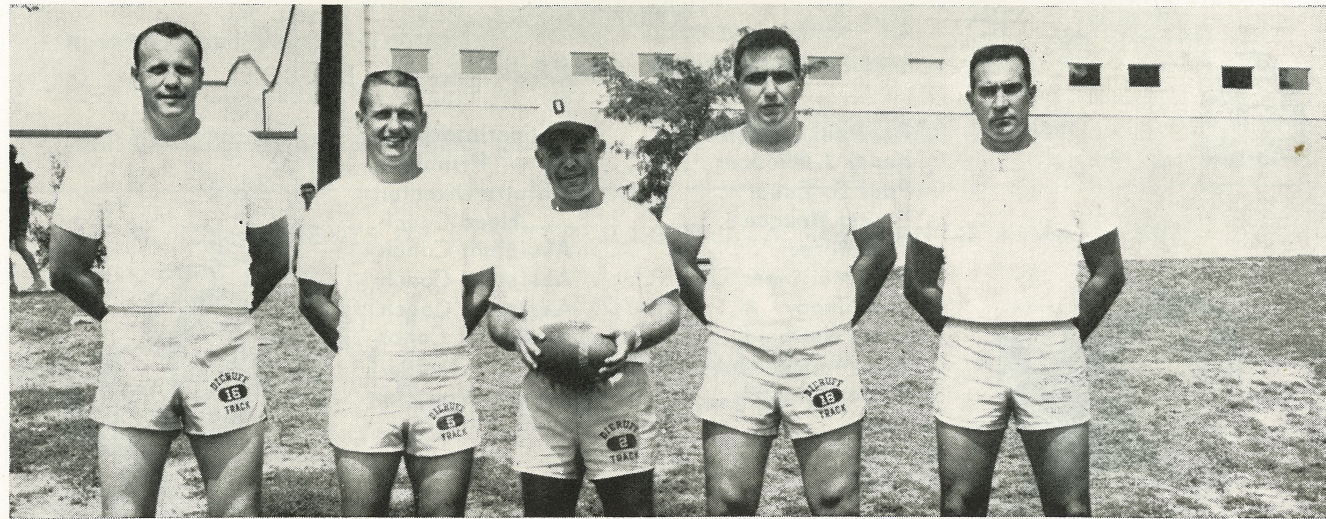
THANKS TO DeFREHN HARDWARE AND PENNDL MOTOR PARTS

# Dieruff High School 1966 Squad



First row, left to right — T. Krasley; D. Williamson; R. Trinkle; K. Eaton; P. Anfuso; J. Dorward; R. Studenich; F. Weaver; G. Tressler; G. Houser; W. Farmer; F. Weierbach.  
 Second row — C. Ahn; T. Belles; B. Christman; B. Eddinger; D. Dorward; G. Stahler; G. Sabo; J. Wenner; J. Young; J. Harris.  
 Third row — R. Sebesta; G. Legath; F. Benson; C. Callaway; J. Leitgeb; D. Chies; R. Sekoch; T. Heiver; M. Kovach; R. McMullin.  
 Fourth row — C. Samuels; R. Ruhe; D. Williams; J. Rizzotto; M. Kuzmak; B. Evans; W. LaFaver; W. Kline; C. Smith; T. Howard.

## Dieruff High School Coaches



Keith Newhard; Tom Wargo; Ernie Wescoe; Mike Meilinger; Dick Tracy.

# NESHAMINY OFFENSIVE UNIT

1966

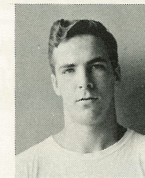
Skins

NESHAMINY - 0  
 NESHAMINY - 13  
 NESHAMINY - 0  
 NESHAMINY - 19

BISHOP EGAN - 41  
 LASALLE - 13  
 EASTON - 13  
 WM. ALLEN - 19



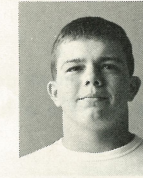
Swenson  
86



Geyer  
72



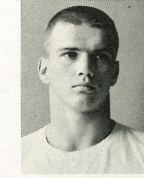
Beccone  
67



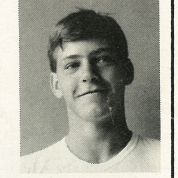
Matlack  
51



Spadaccino  
57

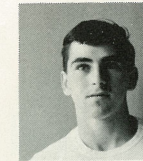


Sauerbry  
75

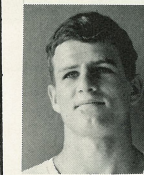


DeMezza  
81

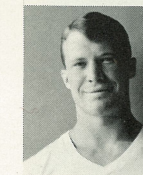
| GAME STATISTICS      | Nesh | Vis. |
|----------------------|------|------|
| First Downs          |      |      |
| Passing              |      |      |
| Rushing              |      |      |
| Passes Attempted     |      |      |
| Passes Completed     |      |      |
| Passes Intercepted   |      |      |
| Fumbles              |      |      |
| Fumbles Recov. (Own) |      |      |
| Fumbles Recov. (Opp) |      |      |
| Punts                |      |      |
| Penalties            |      |      |
| Time Outs            |      |      |



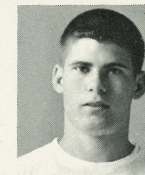
Forchetti  
10



Rakita  
42



Munski  
36



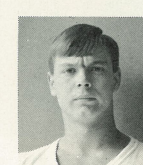
Johns  
31



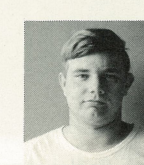
# NESHAMINY DEFENSIVE SAVAGES



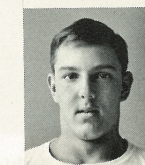
Ivins  
73



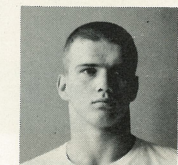
Clemens  
63



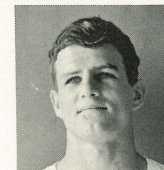
Haynes  
77



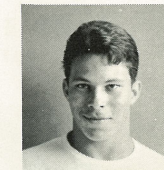
Pulak  
74



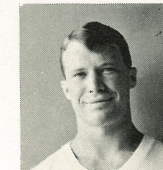
Sauerbry  
75



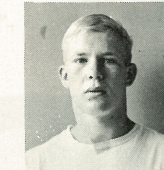
Rakita  
42



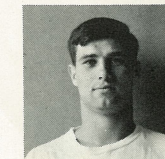
Spadaccino  
52



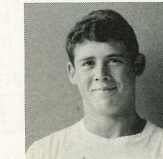
Munski  
36



Jay  
21



Pasquine  
20



Daenz  
37

NESHAMINY - ?

DIERUFF - ?

# A Salute to the Sophomore Class . .

## 10th. GRADE EXECUTIVE COUNCIL

Battle Cry

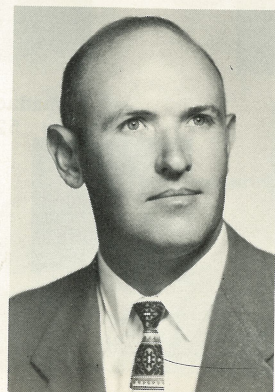
\* \_ \* \_ \* \_ \* \_ \* Here we are you must admit  
the Class of 69's a hit \* \_ \* \_ \* \_ \* \_ \* \_ \*



Seated: Sue Werner, Treas., Ann Tracy, Kathy Rogge, Barbara Reidel, Mary Stewart, Sec'y.  
Standing: Tom Piscitelli, Leigh Lehto, Co-Chairman, Terry Weaver, Craig Reynolds, Chairman, Nancy Campbell, Scott Hough



**JAMES BURT**  
Activities Counselor  
10th Grade



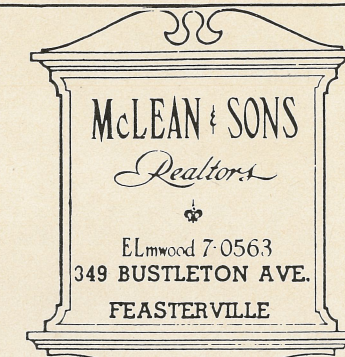
**STANLEY D. HOWELL**  
Asst. Principal  
10th Grade



Route 413 -  
Just North of the  
Turnpike . . . .

and

8901 Frankford  
Avenue, Phila.



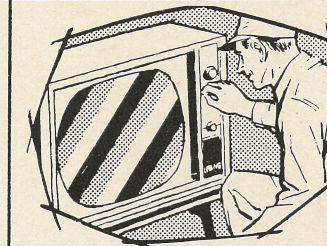
## STRATHMANN SUPPLY COMPANY

L U M B E R

340 Street Road, Southampton, Penna.  
25 Bustleton Pike, Feasterville, Pa.  
2 Yards to Serve You

EL 7-9292

EL 7-3940



## TREVOSE T.V. & ELECTRONICS

AMATEUR RADIO &  
C.B. HEADQUARTERS

U.H.F. CONVERTORS AND ANTENNAS

"We Sell the Best and Service the Rest" . . . . .

ELmwood 7-1400

SKyline 7-5300

## Compliments of FEENEY'S NURSERY

Feasterville, Pa.



## AFTER THE GAME . . .

MEET THE GANG AT



ROUTE 1, LANGHORNE, PENNA.

SK 7-3764



7751 NEWPORTVILLE ROAD  
Windsor Shopping Center  
P.O. BOX 352  
LEVITTOWN, PA.

COMPLETE LINE OF  
GLIDDEN PAINT PRODUCTS

## BUCK HOTEL

Bustleton and  
Bridgetown Pikes

Feasterville  
Pennsylvania



PHONE SK 7-9157



## DICK'S DELICATESSEN

19 BELLEVUE AVENUE  
PENNDL, PA.  
-NEXT TO A & P-

Let Us Cater  
Your Next Party

Try Our Delicious  
Sandwiches & Hoagies

Party Trays

SK7-3200

OPEN 'TILL 10 P.M.  
SUNDAYS INC.



## PIZZERIA

## Facenda's Italian Restaurant

PIZZAS - STEAKS - HOAGIES

ORDERS TO TAKE OUT

HOME DELIVERY

PENNDL SHOPPING CENTER

PENNDL, PA.



# HOME UNITY SAVINGS

*and Loan Association*

SKYROCKET YOUR SAVINGS WITH

**4 1/2 %**

CURRENT DIVIDEND PER ANNUM

FOUNDED 1866



\$100,000,000  
ASSETS

201 S. Bellevue Avenue, Langhorne, Pa.

Phone - SKYline 7-2222

Main Office: 4806 Frankford Ave., Phila., Pa.

# THE MOST

Clean Heat, Comfort, Per Gallon



**SOLAR HEAT**  
heating oil

Order From Us . . .

**JESSE E. TERRY,**  
**INC.**

FEASTERVILLE, PENNSYLVANIA

ELmwood 5-1000

CHEVROLET  
CHEVELLE CHEVY II  
CORVAIR CORVETTE CHEVY TRUCKS  
IMPERIAL CHRYSLER PLYMOUTH  
VALIANT SIMCA  
DODGE DART RAMBLER RENAULT  
DODGE TRUCKS

ACRES AND ACRES  
OF NEW AND USED CARS AND TRUCKS

WORLD'S LARGEST AUTOMOBILE DEALER

**REEDMAN**  
**Corporations**

U.S. Route 1 Langhorne, Pa.

SK 7-4961

Service and Parts Department open from 8:00 a.m.  
to 2 o'clock in the morning.

Visit Reedman's 80-acre, multi-million dollar automobile center  
5,000 passenger car and truck inventory at most times.

# TREVOSE

SAVINGS  
AND LOAN ASSOCIATION

Street and Brownsville Roads, Trevoise  
Trenton & Pennsylvania Aves., Morrisville  
2307 Bristol Pike, Cornwells Heights

ELmwood 7-6700



Assets Over \$46,000,000.00  
Liberal Dividends for more than 50 years

"Bucks County's Original Insured Association Serving  
Delaware Valley, U.S.A."