

NESHAMINY JOINT SCHOOL DISTRICT

NESHAMINY SENIOR HIGH SCHOOL STADIUM  
LANGHORNE, PENNA.

OFFICIAL SOUVENIR  
PROGRAM - 25 CENTS

# NESHAMINY HIGH SCHOOL REDSKINS

VS.

# WM. TENNENT HIGH SCHOOL PANTHERS

## INDEX:

The Neshaminy Campus . . . . .	2
Time Out . . . . .	2
Coaches and Cheerleaders . . . . .	3
Redskin Roster and Staff . . . . .	4
William Tennent Roster and Staff . . . . .	5
Neshaminy Line-up . . . . .	7
William Tennent Line-up . . . . .	8
"The Marching Eighty" . . . . .	10
1966 Redskins . . . . .	11
Neshaminy Offensive and Defensive . . . . .	12
A Salute to the Junior Class . . . . .	13

FRIDAY EVENING, OCTOBER 28, 1966 - 8:15 P.M.



# Ed Carber's Tavern

Where Everyone Meets  
After the Game . . . .  
**BEER - LIQUOR and  
SANDWICHES  
PIZZA PIES**

## FOOTBALL 1966 SCHEDULE

Fri., Sept. 9	Bishop Egan	H
Fri., Sept. 16	LaSalle	A
Fri., Sept. 23	Easton	H
Fri., Sept. 30	Allentown Allen	H
Fri., Oct. 7	Dieruff	H
Fri., Oct. 14	Bethlehem	A
Fri., Oct. 21	Woodrow Wilson	H
Fri., Oct. 28	William Tennent	H
Sat., Nov. 5	Altoona	A
Sat., Nov. 12	Pennsbury	A

**COUNTRY CLUB  
SHOPPING  
CENTER**

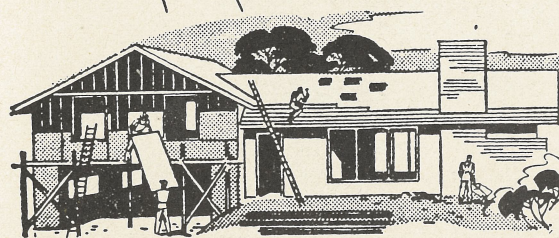
Windsor 3-1940

EL 7-1212  
EL 7-3700



OAKFORD, PENNA.

- LUMBER
- MILLWORK
- BUILDING MATERIALS
- HARDWARE
- FUEL OIL • COAL



Open a Saving Account Now in Person or by Mail

SAVINGS MAKES THE DIFFERENCE

Savings Insured up to \$10,000

## LANGHORNE FEDERAL SAVINGS & LOAN ASSOCIATION

Langhorne, Pa.



Phone: SKyline 7-5138

A. Paul Townsend, Jr., Secretary

COMPLIMENTS OF

## Sylvester & Keating, Inc.

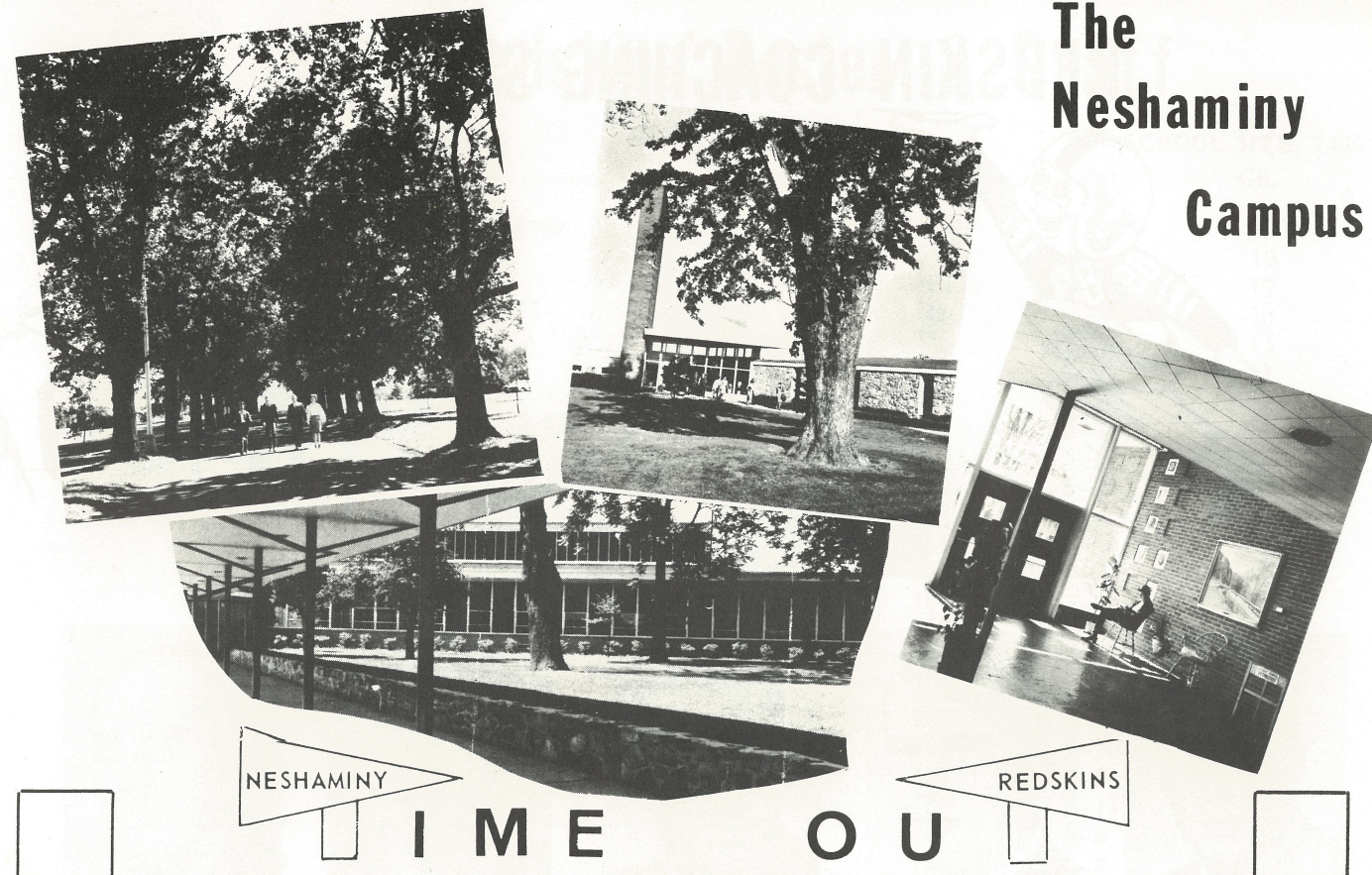


REALTORS - INSURANCE

151 BELLEVUE AVENUE  
PENNDel, PENNSYLVANIA

SKyline 7-6988

# The Neshaminy Campus



NESHAMINY

REDSKINS

TIME OUT

"REDSKINS ARE GREAT"

L  
O  
W  
E  
R  
  
B  
U  
C  
K  
S  
  
L  
E  
A  
G  
U  
E

### Review #7

**RAMS TOP SKINS** -- Wilson High School is on its way to a fine season following Friday's important win over Neshaminy. It took the Rams eight years to get a Redskin scalp and the loss represented Neshaminy's first to Lower Bucks County League Competition since 1957. Wilson had 20 first downs to Neshaminy's 7 due mainly to the efforts of Rick Lewis who turned in an excellent performance at QB. Wilson's offensive unit gained 220 yards on the ground and 120 via the airways for a total 340 yards which amounted to 20 points on the scoreboard.

Neshaminy's offense came to life late in the second quarter as the "Skins" moved inside the Ram 20 yard line, however, a pass interception halted what proved to be the only threat for the Redskins.

Final score....Neshaminy 0 Wilson 20

Welcome William Tennent - The "Panthers" of Wm. Tennent are currently sporting a 3 win 3 loss record and a victory tonight would put them over the 500 mark. The only common opponent Tennent and Neshaminy have played is Wilson High - - and both have lost to the Rams; Tennent by a score of 32-7, Neshaminy by 20-0. Both schools are looking for their first win in Section One competition so the contest should prove exciting. We'll soon see as . . . . .

### JUNIOR CLASS TRIP PLANNED

HEY JUNIORS . . . . . IT'S JUST FOR YOU

Where. A trip to the Gettysburg Battlefield . . . guides and all . . . followed by a trip to the Altoona - Neshaminy football game.

When: Saturday, November 5, 1966

Time: Leave 8:30 a.m. from Country Club Shopping Center and Feasterville Shopping Center; Arrive back at Shopping Centers 2:45 A.M. where parents are responsible for transportation.

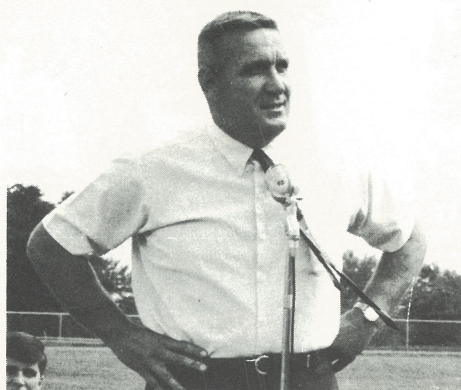
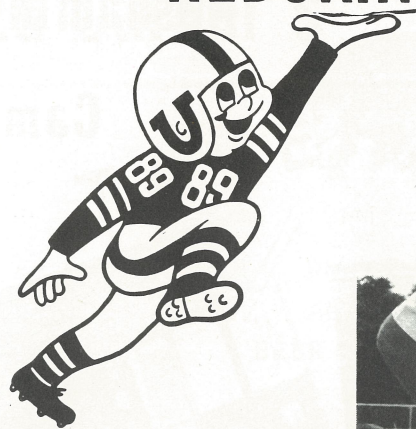
Cost: \$8.00

JOIN THE FUN, TAKE ADVANTAGE OF THIS CLASS TRIP.

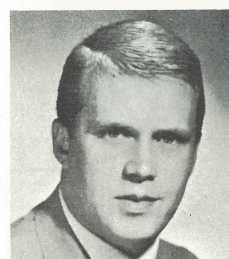
B  
I  
G  
  
S  
I  
X  
  
L  
E  
A  
G  
U  
E



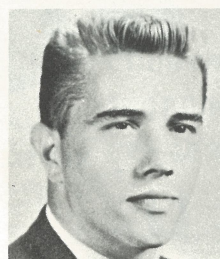
# REDSKIN COACHING STAFF



HEAD COACH McHUGH



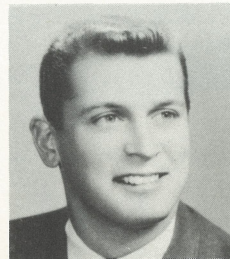
Coach Hart



Coach Kirby



Coach Plumeri

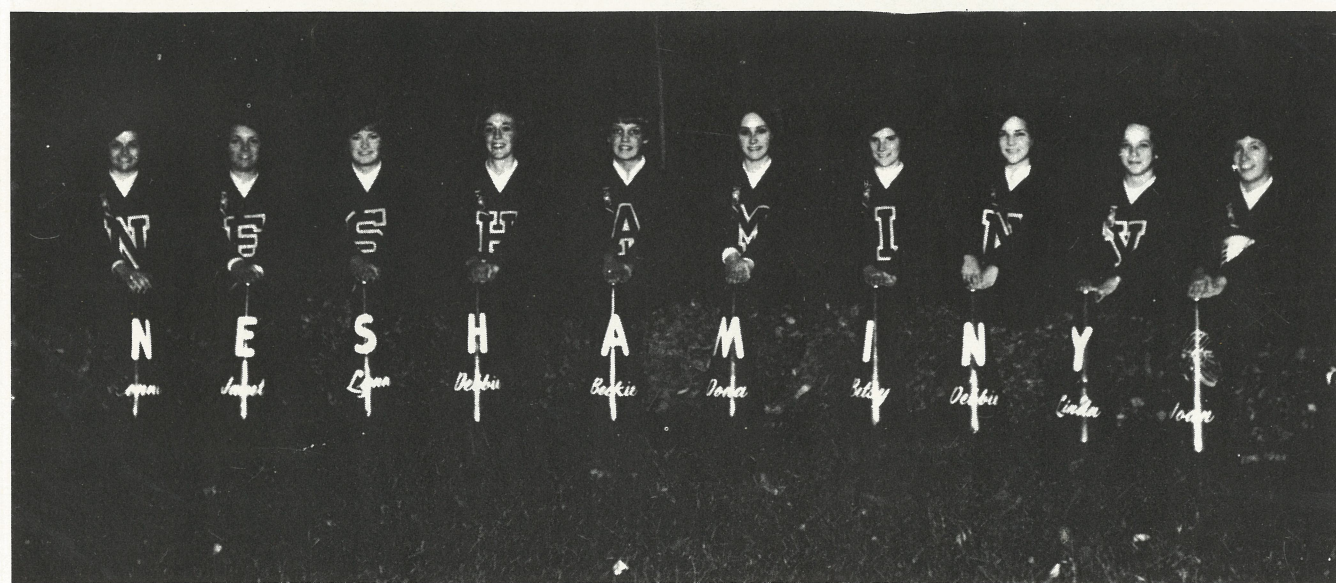


Coach Aceto



Coach Cordelli

## Varsity Cheerleaders



Left to Right: Connie Gimbel, Janet Wolf, Lynn Veelson, Debbie Carlson, Co-Capt., Beckie Howell, Capt., Dona Schuler, Betsy Atkins, Debbie Joines, Linda Lukens, Joan Kraus

# 1966 Redskins' Roster & Staff

COLORS: RED AND BLUE

SCHOOL SIZE: 2400

No.	Name	Pos.	Wt.	Hgt.	Gd.
11	Cunningham, Andy	B	170	5-10	12
20	Kaminski, Don	B	146	5-9	10
21	Jay, Alan	B	171	5-10	12
30	Armour, John	B	140	5-6	10
31	Johns, Craig	B	155	5-8	11
34	Madden, Bruce	G	135	5-7	11
36	Munski, Tom	B	156	5-10	12
37	Daenz, Bill	B	161	5-10	11
38	Magill, Bill	B	165	5-6	11
39	Mason, Doug	B	140	5-11	10
41	Pasquine, Gary	B	168	5-9	10
42	Rakita, Dave	B	161	5-10	12
44	Prendergast, Tom	B	143	5-7	11
46	Magnier, Robert	B	160	5-10	12
49	Spadaccino, Mark	B	150	5-7	10
51	Matlack, Bob	C	186	5-11	12
52	Spadaccino, Sam	G	180	5-6	12
53	Michael, Tim	C	205	6-1	10
54	Ciambrello, Joe	C	182	5-10	12
55	Markman, Pete	G	184	6-0	10
56	Schmidt, Charles	G	166	5-11	11
57	Chychota, Roy	G	182	5-8	12
60	Kulan, A	C	160	5-8	10
61	Nittsrover, Chuch	G	168	5-10	11
62	Westlake, John	G	160	5-7	10
63	Clemens, Bill	G	190	5-10	12
64	Feinman, Alex	G	165	5-9	10
66	Scott, Frank	T	174	6-0	10
67	Becone, Tom	G	151	5-8	12
68	Bourandas, Mike	T	232	6-1	12
70	Fizzano, Nick	T	175	6-0	12
71	Gorski, John	E	151	6-2	11
72	Geyer, John	T	170	6-0	12
73	Ivins, Dave	T	167	6-2	12
74	Pulak, Larry	T	200	6-4	12
75	Sauerbry, Bruce	T	217	6-3	12
76	Worthington, John	T	175	5-10	10
77	Haynes, Bruce	T	258	6-1	11
78	Rider, Bryan	T	175	5-10	11
80	Mahoney, Bill	E	162	5-11	11
81	DeMezza, Frank	E	182	6-0	12
82	Reed, Bob	E	170	6-1	11
83	Vosburgh, Greg	E	170	6-2	11
86	Swenson, Bill	E	178	6-2	11
87	Poland, John	E	148	6-0	11

## NESHAMINY STAFF

Dr. Charles H. Bryan . . . . . Superintendent of Schools  
 Dr. Kenneth E. King . . . . . Principal of High School  
 Stanley Howell . . . . . Ass't Principal of High School  
 Harry E. Franks . . . . . Ass't Principal of High School  
 Richard Howard . . . . . Ass't Principal of High School  
 Edwin Cunfer . . . . . Ass't Principal of High School  
 Tom McHugh . . . . . Head Coach  
 Peter Cordelli . . . . . Ass't Coach  
 Robert Hart . . . . . Ass't Coach  
 Ted Aceto . . . . . Ass't Coach  
 Joseph Kirby . . . . . J.V. Coach  
 Joseph Plumeri . . . . . J.V. Coach

Frank Penn . . . . . Trainer  
 Dr. Gerold J. Effinger . . . . . Team Physician  
 James Crossland . . . . . Band Director  
 Barbara Ball . . . . . Majorettes & Color Guard  
 Howard Troxell . . . . . Announcer  
 Darlene Helicke . . . . . Cheerleading Coach  
 Andrew Pecuch . . . . . Athletic Contest Supervisor  
 George O'Brien . . . . . Program Director  
 Joel Baba . . . . . Equipment Manager  
 "Jaycees" . . . . . Concessions  
 Howard Shook . . . . . Middletown Police  
 Trevoze, Middletown, Penndel . . . . . Rescue Squads

Student Managers: Paul Mangold, Drew King, Walter Schoen



# WILLIAM TENNENT HIGH SCHOOL

NO.	NAME	HT.	WT.	GRADE	POSITION
66	Achuff, Kenneth	5-11	185	12	Guard
33	Bowanko, Ted	5-8	162	12	Back
76	Hack, Walter	6-2	172	12	Tackle
55	Hannum, Davis	6-0	174	12	Center
80	Miley, Robert	5-10	154	12	End
24	Otto, William	5-9	154	12	Back
65	Pope, Richard	5-9	160	12	Center
22	Smith, Edward	5-11	170	12	Back
73	Weigel, Norman	5-10	178	12	Tackle
45	Beatty, Earl	5-11	169	11	Back
	Brauer, Thomas	5-5	140	11	Guard
21	Connor, Thomas	5-10	161	11	Back
84	Cox, David	6-0	160	11	End
32	Eisenhart, Nelson	5-11	168	11	Back
83	Gaskill, Rod	5-10	153	11	End
74	Hannaberry, Robert	5-11	174	11	Tackle
11	Heidelberger, Jon	5-9	150	11	Back
42	Hesse, Ed	5-6	133	11	Back
67	Hurrell, Guy	5-9	154	11	Guard
75	Keithline, Robert	5-9	168	11	Tackle
15	Krause, Robert	6-0	154	11	Q-Back
54	Leonard, William	5-9	168	11	Guard
78	Lieberman, James	6-0	176	11	Tackle
20	O'Brien, Thomas	5-11	155	11	Back
79	Peterson, Frederick	6-0	180	11	Tackle
62	Regan, James	5-6	180	11	Guard
68	Singley, William	6-0	165	11	Guard
62	Taraschi, Robert	5-11	165	11	Tackle
12	Tenaglia, Mike	5-10	135	11	Q-Back
16	Wolfrum, Robert	5-9	175	11	Back
53	Blackway, Lee	6-0	150	10	Center
14	Cottman, Wayne	5-11	145	10	Q-Back
71	Dellmyer, Frank	5-11	165	10	Guard
31	Dougherty, Daniell	5-10	145	10	Back
41	Fleischut, Daniel	5-6	130	10	Back
43	Howell, Mickey	5-5	140	10	Back
51	Kirsch, John	5-8	130	10	Center
44	Martin, Thomas	6-1	185	10	End
30	Mandes, Michael	5-9	135	10	Back
34	Pyle, Thomas	5-8	155	10	Back

## STAFF

Superintendent - Dr. Everett A. McDonald, Jr.  
Principal - James D. Exum  
Athletic Director - Everett L. Farr, Jr.  
School Colors - Black and White  
Band Director - Francis Gloster  
Mascot - Panther

Head Coach - Jack Harrington  
Asst. Coaches - Dick Northrup  
Gary Bowman  
Richard Boerner  
Robert Johnson

SKyline 7-2161  
WI 3-2526

## Langhorne Gardens Flower Shoppe



FLOWERS FOR ALL OCCASIONS

Lincoln Highway & Woodborne Rds.  
Langhorne, R.D. 1, Penna.

## ROLLINS ESSO SERVICE



Bellevue Avenue and  
Superhighway - Langhorne  
SK 7-9184  
Route 1 - Penndel - SK 7-9282



## IRWIN'S DRUG STORE

THE PRESCRIPTION DRUG STORE

SKyline 7-2311

Langhorne, Pa.



COMPLIMENTS OF  
LYLE SCHWALM

## SKYLINE AGENCY, Inc.

COMPLETE REAL ESTATE SERVICES  
TAX ACCOUNTING

SK 7-5124

Route 1, Penndel, Pa.

PARENTS and FRIENDS . . . . .

## NESHAMINY N CLUB

JOIN NOW !!!

\$2.00 PER YEAR

Films and Refreshments Every Monday Night

High School Cafeteria - 7:30 P.M.

ALL ARE WELCOME

Call Charles Barr, CY 5-6531 or Ed Coffin, WI 6-4603

## CENTRAL-PENN NATIONAL BANK

8 BUCKS COUNTY OFFICES

Feasterville - Street Road . Feasterville - Bustleton Pike  
Langhorne . Levittown . Newtown  
Morrisville . Penndel . Southampton  
Member Federal Deposit Insurance Corporation

AUTHORIZED DEALER CHRYSLER  
MOTORS CORPORATION



## Spat's

## Tomato Pies

PENNDel,  
PA.

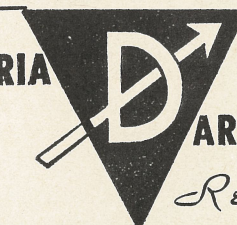
Open Every Nite  
except TUES.

Home Delivery . . . .  
Call SK 7-2778



SKyline 7-4928

GLORIA



ARROW

Real Estate

117 N. Bellevue Ave.

Langhorne, Pa.

SUPPORT YOUR ATHLETIC BOOSTER CLUB



# WITH THE TASTE YOU NEVER GET TIRED OF

ALWAYS REFRESHING,  
THAT'S WHY THINGS  
GO BETTER WITH COKE  
AFTER COKE  
AFTER COKE

NESHAMINY SENIOR HIGH SCHOOL

Probable Starting Line-Up - Defense

HALFBACK  
DEMEZZA  
81



HALFBACK  
PASQUINE  
20



LINEBACKER  
JAY  
21



LINEBACKER  
MUNSKI  
36



CB  
DAENZ  
37



CB  
RAKITA  
42



MIDDLE GUARD

RIGHT END  
IVINS  
73



RIGHT TACKLE  
PULAK  
74



SPADACCINO  
52



LEFT TACKLE  
MICHAEL  
53



LEFT END  
SWENSON  
86



Probable Starting Line-Up - Offense

LEFT END  
SWENSON  
86



LEFT TACKLE  
GEYER  
72



LEFT GUARD  
BECCONE  
67



CENTER  
MATLACK  
51



RIGHT GARD  
SCHMIDT  
56



RIGHT TACKLE  
SAUERBRY  
75



RIGHT END  
DEMEZZA  
81



QUARTERBACK  
CUNNINGHAM  
11



HALFBACK  
RAKITA  
42



FULLBACK  
MAGILL  
38



HALFBACK  
JOHNS  
31



WM. TENNENT HIGH SCHOOL  
Probable Starting Line-up - Offense

LE  
Beatty  
45

LT  
Peterson  
79

LG  
Achuff  
66

C  
Pope  
65

RG  
Hurrell  
67

RT  
Weigh  
73

RE  
Martin  
44

QB  
Krause  
15

LHB  
Smith  
22

FB  
Wolfrum  
16

RHB  
Otto  
24

Probable Starting Line-up - Defense

LE  
Lieberman  
78

LT  
Peterson  
79

MG  
Hannum  
55

RT  
Hack  
76

RE  
Martin  
44

CB  
Otto  
24

LB  
Achuff  
66

LB  
Leonard  
54

CB  
Connor  
21

HB  
Smith  
22

HB  
Fleischut  
41

## OFFICIALS FOR TONIGHT'S GAME

Referee . . . . . J. Gordon  
Umpire . . . . . J. McInerney  
Lines . . . . . J. Reilly  
Field Judge . . . . . J. Reichwein

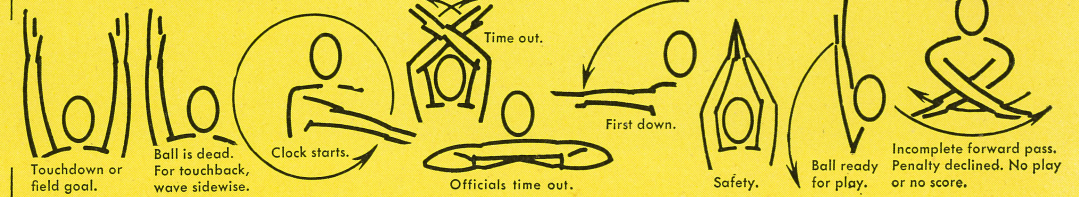
REDSKINS Next Home Game - Bishop Egan  
Friday Evening, September 8, 1967- 8:15

TEAMS	1	2	3	4	TOTAL
Wm. Tennent High School					
Neshaminy High School					

## REFEREES' SIGNALS



## PROCEDURE SIGNALS



things go  
better  
with  
Coke



things go  
better  
with  
Coke



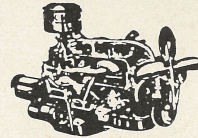


GOOD LUCK, REDSKINS!!!

**BUCKS COUNTY  
BEVERAGE CO.**

Penndel, Pa.

**SODANO'S AUTO PARTS**



— COMPLETE MACHINE SHOP SERVICE —  
LINCOLN HIGHWAY AND HULMEVILLE AVE.  
PENNDL, PENNA.  
SKyline 7-5115 Wlndsor 5-2444



**TREVOSE FAMILY  
SHOE STORE**  
SPECIALIZING IN  
FAMOUS BRANDS —  
CANCELLATIONS  
Elmwood and Brownsville Road  
Trevose Heights Trevose, Pa.  
Phone ELmwood 7-0209



**SHIELDS PHARMACY**  
**PRESCRIPTION  
SPECIALISTS**

PHARMACY  
TREVOSE

EL 5-1555

**DUNKIN' DONUTS**

ARE DELICIOUS  
ROUTE 413, LEVITTOWN, PA.  
NEAR NEWPORTVILLE ROAD  
BUSTLETON PIKE  
NEAR STREET ROAD  
FEASTERVILLE, PA.  
BOTH OPEN 24 HOURS



Compliments of  
**LANGHORNE  
COUNTRY CLUB**  
GOLF . . . . SWIMMING  
North Bellevue Avenue  
SKyline 7-9186 LANGHORNE

**ROLLERAMA SKATING RINK**

"FUN FOR THE WHOLE FAMILY"

Route 413 and Newportville Road  
Levittown, Penna.

Call 949-2782 for Group and Party Rates

*Artistry in flowers . . .*

**Bellevue Floral Shop**

From Our Own  
Greenhouses . . .

CUSTOM DESIGNED PLASTIC  
FLOWERS

828 BELLEVUE AVE  
HULMEVILLE  
SK 7-6560  
SK 7-6654



COMPLIMENTS OF FEASTERVILLE PLAZA MERCHANT'S ASSOCIATION

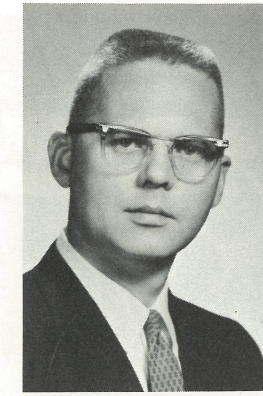
**Good Luck**  
**REDSKINS**

FEASTERVILLE, PENNSYLVANIA

THANKS TO DeFREHN HARDWARE AND PENNDL MOTOR PARTS



BARBARA BALL  
Majorettes  
Color Guard

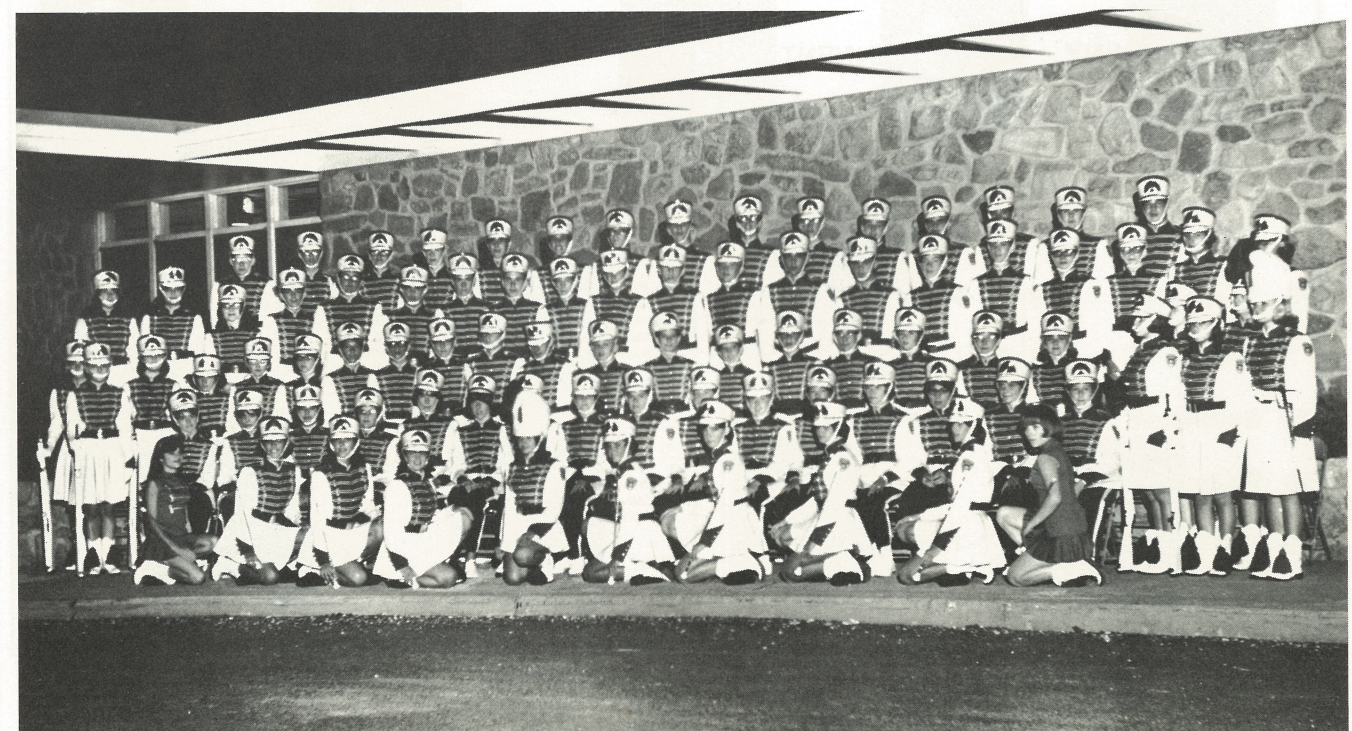


JAMES CROSSLAND  
Band Director

LADIES AND GENTLEMEN,  
WE PROUDLY PRESENT,  
YOUR . . . . NESHAMINY.  
SENIOR HIGH SCHOOL  
"REDSKIN" MARCHING  
BAND, MAJORETTES,  
AND COLOR GUARD . . .

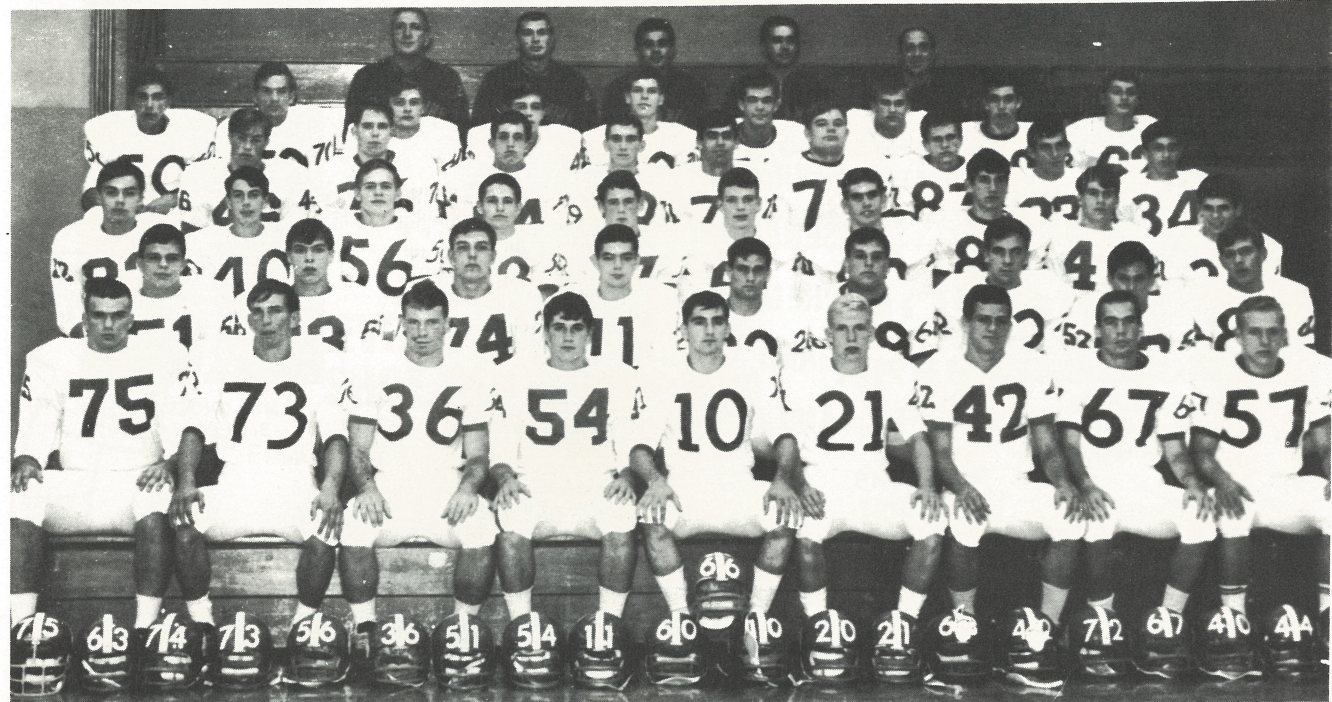
"The Marching Eighty consists of seventy-two regular marching bandsmen, plus eight uniformed alternates. The formations and marching routines used by this year's band are based on a basic block band formation of seventy-two players. The 1966 "Redskin Marching Band" includes 20 Seniors, 22 Juniors, and 38 Sophomores. Tony Katona and Jerry Solimine, co-drum-sergeants, are in charge of all playing commands for the band. Mike King is the band's student announcer.

The "Band Front" is made up of eight majorettes and twelve Color Guard. These groups are under the faculty sponsorship of Barbara Ball. The majorette captain is Terry Stockslager. Judy Gottschall is the color guard captain. The majorettes and color guard provide feature twirling and drill routines during the band's half-time presentations.





# 1966 Redskins



First Row: B. Sauerbry, D. Ivins, T. Munski, J. Ciambrello, E. Forchetti, A. Jay, D. Rakita, T. Beccone, R. Chychota  
 Second Row: R. Matlack, W. Clemens, L. Pulak, A. Cunningham, G. Pasquine, M. Bourandas, S. Spadaccino, F. DeMezza  
 Third Row: R. Reed, D. Houraham, C. Schmidt, W. Magill, W. Daenz, C. Nittsrover, W. Mahaney, W. Swenson, T. Prendergast, C. Johns.  
 Fourth Row: J. Magier, B. Rider, M. Feinman, D. Mason, J. Gorski, B. Haines, J. Poland, G. Vosburg, B. Madden,  
 Fifth Row: J. Oczkowski, F. Scott, J. Kulan, M. Spadaccino, J. Armour, P. Markman, T. Michaels, Rider, S. Worthington,  
 Coaches: T. McHugh, T. Aceto, J. Plumeri, J. Kirby, P. Cordelli

## A LOOK AT THE RECORD

NESHAMINY		WM. TENNENT	
0	Bishop Egan 41	19	Up. Moreland 21
13	LaSalle 13	7	Hatboro 28
0	Easton 13	25	Bensalem 8
19	Wm. Allen 19	7	Wilson 32
7	Dieruff 16	21	Lansdale Ca. 7
20	Bethlehem 7	23	Morrisville 0
0	Wilson 20		
?	Wm. Tennent ?	?	Neshaminy ?

LOWER BUCKS COUNTY FOOTBALL LEAGUE				
SECTION ONE				
Team	Section One Record	Section Two Record	Non-League Record	Overall Record
Wilson	2 0 0	0 0 0	4 1 0	6 1 0
Pennsbury	0 0 0	1 0 0	4 1 0	5 1 0
Neshaminy	0 1 0	0 0 0	1 3 2	1 4 2
Tennent	0 1 0	2 0 0	1 2 0	3 3 0
SECTION TWO				
Team	Section Two Record	Section One Record	Non-League Record	Overall Record
Lower Moreland	3 0 0	0 0 0	2 0 0	5 0 0
Council Rock	2 1 0	0 0 0	1 1 0	3 2 0
Bensalem	2 1 0	0 2 0	0 2 0	2 5 0
Bristol	1 2 0	0 0 0	1 1 0	2 3 0
Morrisville	1 2 0	0 1 0	0 2 0	1 5 0
Jenkintown	0 3 0	0 0 0	0 1 1	0 4 1
INDEPENDENT				
Team	Phila. Cath. North. Div Record	Overall Record		
Bishop Egan	4 0 0	7	0	0
Archbishop Wood	1 3 0	2	4	0
Team	Penn-Jersey Conference Record	Overall Record		
George School	1 2 0	1	2	0

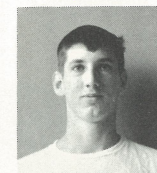
# NESHAMINY OFFENSIVE UNIT

1966

Skins

NESHAMINY — 0  
 NESHAMINY — 13  
 NESHAMINY — 0  
 NESHAMINY — 19

BISHOP EGAN — 41  
 LASALLE — 13  
 EASTON — 13  
 WM. ALLEN — 19



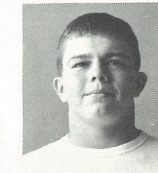
86, Swenson



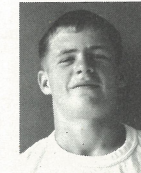
72, Geyer



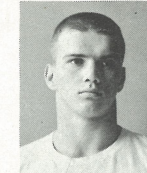
67, Beccone



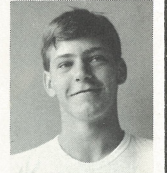
51, Matlack



56, Schmidt

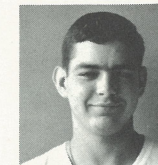


75, Sauerbry

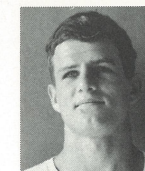


81, DeMezza

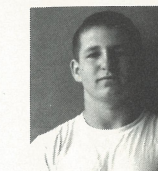
GAME STATISTICS	Nesh	Vis.
First Downs		
Passing		
Rushing		
Passes Attempted		
Passes Completed		
Passes Intercepted		
Fumbles		
Fumbles Recov..(Own)		
Fumbles Recov. (Opp)		
Punts		
Penalties		
Time Outs		



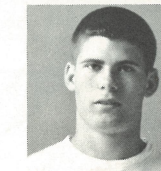
11, Cunningham



42, Rakita



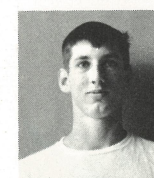
38, Magill



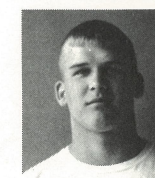
31, Johns



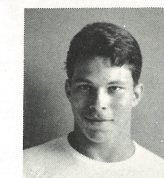
## NESHAMINY DEFENSIVE SAVAGES



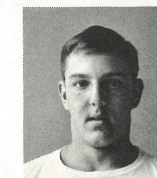
86, Swenson



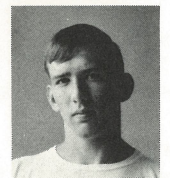
53, Michael



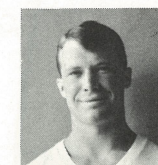
52, Spadaccino



74, Pulak



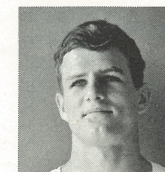
73, Ivins



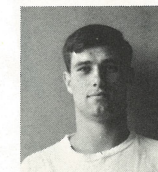
36, Munski



21, Jay



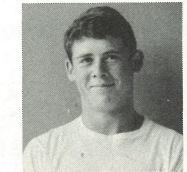
42, Rakita



20, Pasquine



81, DeMezza



37, Daenz

NESHAMINY — 7  
 NESHAMINY — 20  
 NESHAMINY — 0  
 NESHAMINY — ?

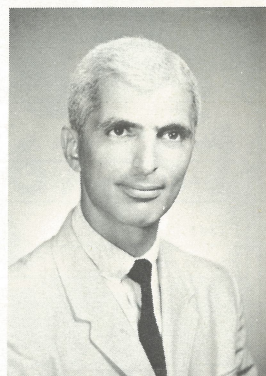
DIERUFF — 16  
 BETHLEHEM — 7  
 WILSON — 20  
 WM. TENNENT — ?



# A Salute to the Junior Class . .



L to R: Harry E. Franks, Asst. Principal - Bill Cherry, President - Lois Nelson, Treasurer  
Chuck Nittrover, Vice President - Seated: Linda Weissinger, Secretary.



JOEL BABA  
Activities Counselor



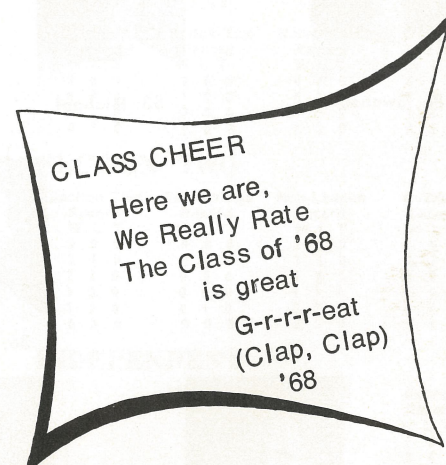
## ALMA MATER

Neshaminy High School, true to the end  
Echoes forever, spirits ascend  
Honest endeavor, virtue and strife,  
Memories bring us the best years of our life.

Hail Alma Mater, hail red and blue  
Fellow Playwickians we salute you  
Fond recollections vivid and true,  
Neshaminy High School, we're loyal to you.



WE HAVE NOT COME TO NESHAMINY TO FAIL!



Route 413 -  
Just North of the  
Turnpike . . . .

and  
8901 Frankford  
Avenue, Phila.

## STRATHMANN SUPPLY COMPANY

L U M B E R

340 Street Road, Southampton, Penna.  
25 Bustleton Pike, Feasterville, Pa.  
2 Yards to Serve You

EL 7-9292

EL 7-3940

Compliments of  
**FEENEY'S NURSERY**

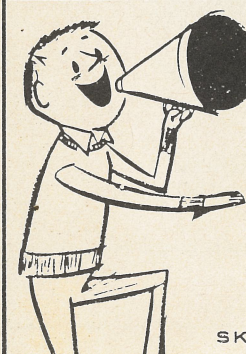
Feasterville, Pa.



PAINTING . Industrial  
**MERC ZANNI** . Commercial  
WI 5 4433 . Residential

7751 NEWPORTVILLE ROAD  
Windsor Shopping Center  
P.O. BOX 352  
LEVITTOWN, PA.

COMPLETE LINE OF  
GLIDDEN PAINT PRODUCTS



## DICK'S DELICATESSEN

19 BELLEVUE AVENUE  
PENNDL, PA.  
-NEXT TO A & P-

Let Us Cater  
Your Next Party

Try Our Delicious  
Sandwiches & Hoagies

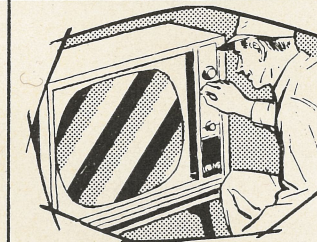
Party Trays

SK7-3200

OPEN 'TILL 10 P.M.  
SUNDAYS INC.



ELmwood 7-0563  
349 BUSTLETON AVE.  
FEASTERVILLE



## TREVOSE T.V. & ELECTRONICS

AMATEUR RADIO &  
C.B. HEADQUARTERS

U.H.F. CONVERTORS AND ANTENNAS

"We Sell the Best and Service the Rest" . . . . .

ELmwood 7-1400

Skyline 7-5300

## AFTER THE GAME . . .

MEET THE GANG AT



ROUTE 1, LANGHORNE, PENNA.

SK 7-3764

## BUCK HOTEL

Bustleton and  
Bridgetown Pikes

Feasterville  
Pennsylvania



PHONE SK 7-9157

## Facenda's Italian Restaurant

PIZZAS - STEAKS - HOAGIES

ORDERS TO TAKE OUT

HOME DELIVERY

PENNDL SHOPPING CENTER

PENNDL, PA.



# HOME UNITY SAVINGS

*and Loan Association*

SKYROCKET YOUR SAVINGS WITH

**4 1/2 %**

CURRENT DIVIDEND PER ANNUM

FOUNDED 1866



\$100,000,000  
ASSETS

201 S. Bellevue Avenue, Langhorne, Pa.

Phone — Skyline 7-2222

Main Office: 4806 Frankford Ave., Phila., Pa.

# THE MOST

Clean Heat, Comfort, Per Gallon



Order From Us . . .

**JESSE E. TERRY,**  
**INC.**

FEASTERVILLE, PENNSYLVANIA

ELmwood 5-1000

CHEVROLET  
CHEVELLE CHEVY II  
CORVAIR CORVETTE CHEVY TRUCKS  
IMPERIAL CHRYSLER PLYMOUTH  
VALIANT SIMCA  
DODGE DART RAMBLER RENAULT  
DODGE TRUCKS

ACRES AND ACRES  
OF NEW AND USED CARS AND TRUCKS

WORLD'S LARGEST AUTOMOBILE DEALER

**REEDMAN**  
**Corporations**

U.S. Route 1

Langhorne, Pa.

SK 7-4961

Service and Parts Department open from 8:00 a.m.  
to 2 o'clock in the morning.

Visit Reedman's 80-acre, multi-million dollar automobile center  
5,000 passenger car and truck inventory at most times.

# TREVOSE

SAVINGS

AND LOAN ASSOCIATION

Street and Brownsville Roads, Trevoise  
Trenton & Pennsylvania Aves., Morrisville  
2307 Bristol Pike, Cornwells Heights

ELmwood 7-6700



Assets Over \$46,000,000.00  
Liberal Dividends for more than 50 years

"Bucks County's Original Insured Association Serving  
Delaware Valley, U.S.A."